



STONE WORKS LTD.  
NATURAL STONE  
SINCE 1980

# *The Jerusalem Stone Collection*

A Guide for Natural Stone  
from Israel

Jerusalem Gardens Stone Works Ltd.  
[www.jgsw-group.com](http://www.jgsw-group.com)



# About JGSW

*Welcome to the Israel-quarried* Jerusalem stone guide!

For over 3,000 years Jerusalem Stone has been known for its great beauty and durability. When visiting the old city of Jerusalem or touring Israel, one soon discovers stone from the biblical era which has been preserved and enhanced in beauty and warmth.

Jerusalem stone is offered in various colors expressing warmth and beauty. The stone is quarried in the largest quarry site in Israel and processed by numerous types of **finishes - traditional, antique, modern and custom-made** according to the client's request. Jerusalem stone products are used throughout the building - **exterior wall cladding and paving, interior wall covering and flooring, windows, stairs, columns, baths**, and many other interior and garden-design articles of furniture and fixtures. We are able to produce any article from the simplest tile to specially designed cornices and all in custom-made sizes.

The stone fits both private and public projects and is extremely strong and durable for use in various climates. **The Jerusalem Stone is natural Dolomite limestone** and defined as a high-density, class III stone and has become a popular brand throughout the world.



Quarries



Production at the JGSW factory



Edmund Safra Synagogue, NY, USA



David Village, Jerusalem, Israel

**Since 1980, the Jerusalem Garden Stone Works Company** has specialized in a multiplicity of stone products and sells over 2.5 million square meters of stone each year. The company employs professional teams specializing in locating qualitative materials and matching them to the project's needs, as well as providing architectural and technical support.

We will be pleased to offer you a choice of more than 20 different types of stone color and variety of finishes, assist and share with you our vast experience and knowledge.

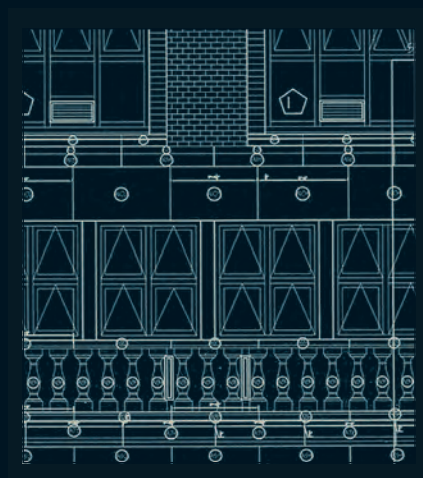
**Page 3 presents a chart to assist you in customizing your Jerusalem Stone product. Following the steps of the chart will take you through a sequence of choosing the color, finish, edge and dimensions of your choice.**



## Architectural Department

JGSW maintains an In-House Architectural Department in order to service its clients.

All shop drawings are prepared in-house in coordination with production, in order to achieve maximum efficiency to meet the project's requirements. An interactive process of shop drawings preparation takes place between the project's architect and JGSW architects using industry-standards graphic software.



### Services

- ✦ Take Off
- ✦ Shop Drawings
- ✦ Cut Tickets
- ✦ Installation Plans & Installation Details
- ✦ 3D representation of stone for Building Information Modeling (BIM) & Integrated Project Delivery (IPD)

### Preconstruction service

- ✦ Design - Assist
- ✦ Stone Consultation

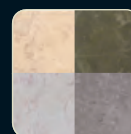


## How to Use this Guide

.1

Choose

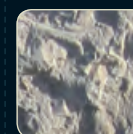
### Color



.2

Choose

### Finish



.3

Choose

### Edge Finish



.4

Choose

### Dimensions

of your product



.5

Make a sample request via

### Email or Phone



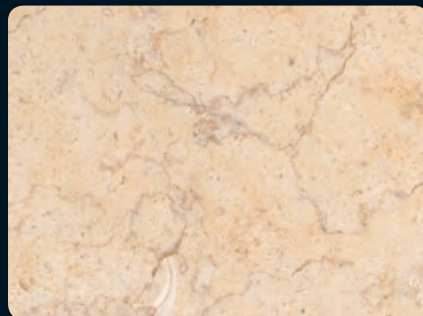
**Ask us for more products and colors that you cannot find in this guide. We will cut-to-size all dimensions according to your request.**



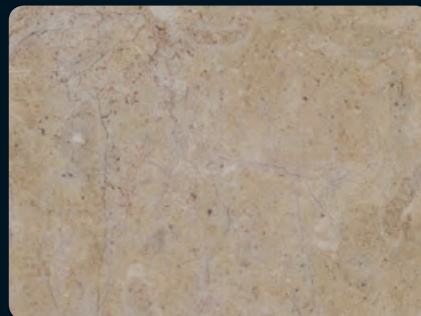
\* The U.S. Green Building Council (USGBC) is a 501(c)(3) nonprofit that developed the LEED (Leadership in Energy and Environmental Design) Green Building Rating System. The Logo is a trademark owned by the U.S. Green Building Council and is used by permission.

# Colors

Natural stones vary in color, finish and character. All samples must be approved before the final order. Technical standards testing on all Jerusalem Stone is available upon request.



**HEBRON GOLD**  
*Cream/Gold dolomite limestone with some fossil content. **Sizes:** tiles, cut-to-size, slabs and cubic elements.*



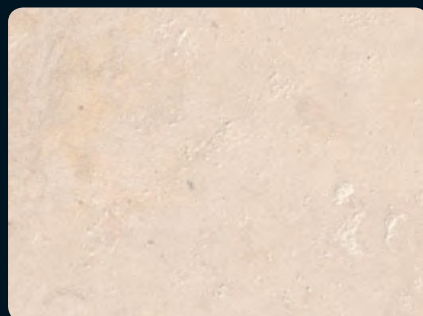
**BENJAMIN GOLD**  
*Dolomite in shades of dark gold. Particularly beautiful in chiseled finish. **Sizes:** tiles, cut-to-size, slabs and cubic elements.*



**JERUSALEM GREY**  
*Dolomite limestone in light grey color.*



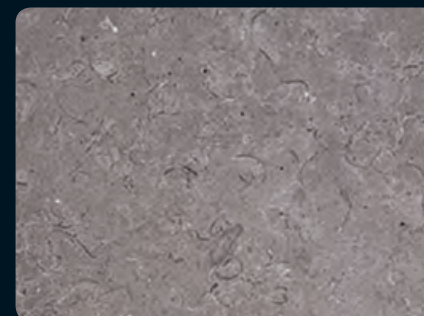
**HEBRON WHITE**  
*White, dolomite limestone with high fossil content, red veining. **Sizes:** tiles, cut-to-size, slabs and cubic elements.*



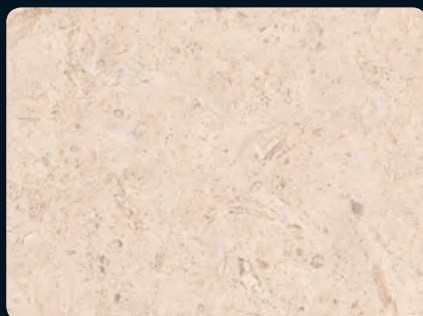
**PEARL**  
*Dolomite limestone with uniform fossil content in cream colors. **Sizes:** tiles, cut-to-size, slabs and cubic elements.*



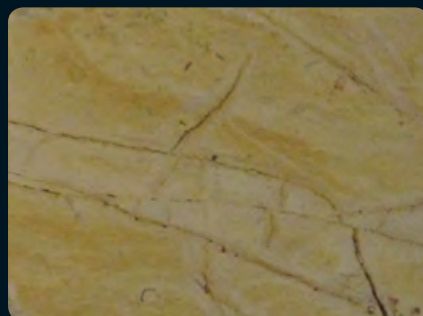
**GALIL GOLD**  
*Dolomite limestone in shades of light gold. **Sizes:** tiles, cut-to-size, slabs and cubic elements.*



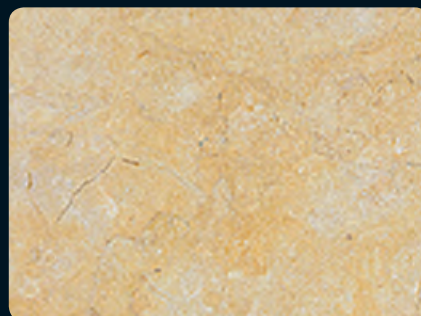
**BENJAMIN GREY**  
*Dolomite in shades of dark grey. **Sizes:** tiles, cut-to-size, slabs and cubic elements.*



**KARINA**  
*Cream dolomite limestone with some fossil content. **Sizes:** tiles, cut-to-size, slabs and cubic elements.*



**JERUSALEM GOLD**  
*Dolomite with oxidized iron shades of gold, providing gold appearance. **Sizes:** up to 12" (30 cm) wide by random length and cubic elements.*



**RAMON GOLD**  
*Dolomite limestone with uniform fossil content in yellow colors. **Sizes:** tiles, cut-to-size, slabs and cubic elements.*



**RAMON GREY**  
*Dolomite limestone with relatively uniform fossil content. Grey/white providing the effect of grey - slight hint of reddish veins occasionally. **Sizes:** tiles, cut-to-size, slabs and cubic elements.*





# Finishes

These finishes can be applied to each stone color.  
It is recommended to ask a representative for a specific  
finish - color combination.

## Honed & Polished



Cotroceni Park Mall, Bucharest, Romania

## Brushed



Our brushed stone finish gives the Jerusalem Stone the appearance of being swept by time. It is smooth to the touch and yet has a texture that is like a rippling sea.



Private Residence, Israel

## Sandblasted



Private Residence, Israel



# Finishes

## Bush Hammered || *Mutabe*

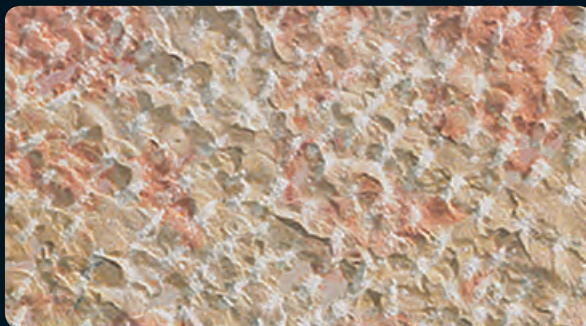


A subtle finish composed of small textured dots. The density of the dots and thus their texture can vary as per the client's request.



Ben Gurion Airport, Tel Aviv, Israel

## Light Chiseled ||| *Musamsam*



A light hand-chiseled finish with a fine texture that looks like sprinkled sesame seeds.



Hebrew Union College, Jerusalem, Israel

## Rough Chiseled ||| *Taltish*



A rough-chiseled hand-made finish with deep texture.



Torat Emet Synagogue, Columbus, OH USA



# Finishes

## Rock Face *Tubze*

Finish of stone is Hand chiseled to a convex shape.



Private Residence, Israel

## Split Face



### Split Face

Machine split finish without chiseled marks provides a natural split look.



Ohel Israel, Sao Paulo, Brazil



# Finishes

## Grass Finish



### Modern Line Finish

The finish can be applied on repetitive pattern or cut-to-size dimensions.



Private Residence, Israel



Soha 118, NYC, NY, USA



452 Fifth Ave Building, New York City, NY USA

# Finishes

## Antique Gold Collection



A photograph of a light-colored, ornate console table with a curved front and decorative panels. The table holds a potted plant, a bowl of fruit, and a small decorative object. The floor is covered in large, light-colored square tiles. A red upholstered chair is visible in the foreground.

Private Residence, Israel

Tavor 



A large, circular stone floor medallion is the central focus of the image. The medallion is composed of numerous light-colored, irregularly shaped stone tiles arranged in a radial pattern, with a central circular tile. The room has light-colored walls and a large, arched doorway in the background, which is open, revealing a bright outdoor scene with greenery and a body of water. To the left, there is a dark wooden cabinet and a lamp. The overall atmosphere is warm and elegant.

Private Residence, CT, USA

## Reclaimed Stone ██████████



Private Residence, Israel



# Edge Finish



Full Bullnose



Eased



Chiseled



Tumbled



Straight Cut



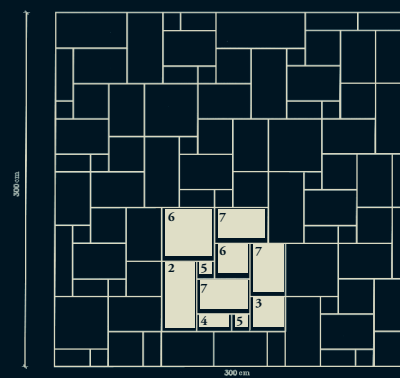
Slightly Rounded



Half Bullnose

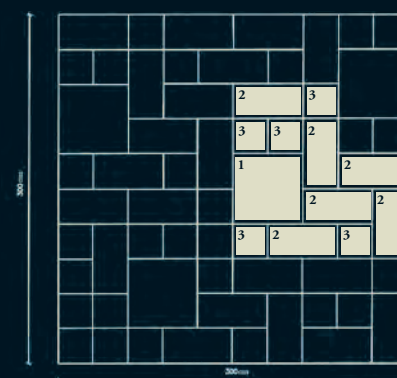
# Ashlar Patterns

Module B



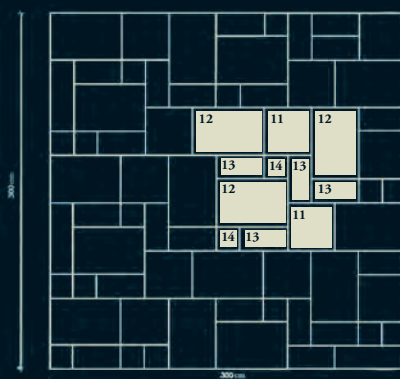
Stone 2	12 x 24"	30 x 60 cm	1 piece
Stone 3	12 x 12"	30 x 30 cm	2 pieces
Stone 4	6 x 12"	15 x 30 cm	1 piece
Stone 5	6 x 6"	15 x 15 cm	2 pieces
Stone 6	18 x 18"	45 x 45 cm	1 piece
Stone 7	12 x 18"	30 x 45 cm	3 pieces

Module C



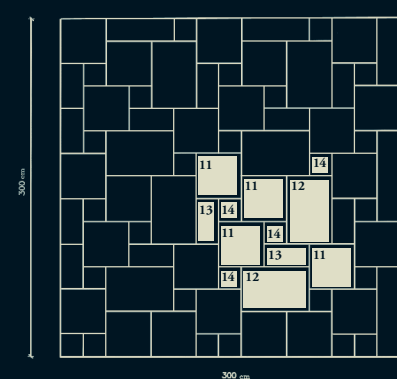
Stone 1	24 x 4"	60 x 60 cm	1 piece
Stone 2	12 x 24"	30 x 60 cm	6 pieces
Stone 3	12 x 12"	30 x 30 cm	5 pieces

Module D



Stone 14	8 x 8"	20 x 20 cm	2 pieces
Stone 13	8 x 16"	20 x 40 cm	4 pieces
Stone 11	16 x 16"	40 x 40 cm	2 pieces
Stone 12	16 x 24"	40 x 60 cm	3 pieces

Module F



Stone 12	16 x 24"	40 x 60 cm	2 pieces
Stone 13	8 x 16"	20 x 40 cm	2 pieces
Stone 14	8 x 8"	20 x 20 cm	4 pieces
Stone 11	16 x 16"	40 x 40 cm	4 pieces

- Stones will be cut 0.5 cm (0.2") shorter than width and length specified, for joints, unless otherwise specified.
- Stones of all modular shapes can be scaled up or down.

# Products

## Slabs

### Finishes

Polished, honed, saw-cut, bush-hammered, sand-blasted, brushed

### Sizes

Approximately

6.5 x 8.2 ft. 180 x 250 cm

Available in thicknesses from

3/4 to 2" 2 to 4.6 cm

### Uses

Slabs, cut-to-size, counter tops, stairs, customized products



Slabs

## Tiles

### Standard Dimensions

Height x Length	Thickness			
	3/8"	1/2"	5/8"	3/4"
6" x 6"	✓	✓	✓	✓
8" x 8"	✓	✓	✓	✓
12" x 12"	✓	✓	✓	✓
16" x 16"	✓	✓	✓	✓
18" x 18"	✓	✓	✓	✓
24" x 24"	✗	✓	✓	✓
36" x 36"	✗	✓	✓	✓
12" x 24"	✓	✓	✓	✓
16" x 24"	✓	✓	✓	✓
12" x 36"	✗	✓	✓	✓
18" x 36"	✗	✓	✓	✓
24" x 36"	✗	✓	✓	✓
Ashlar Patterns	✓	✓	✓	✓
8"-14" x Random	✓	✓	✓	✓

*All Cut-To-Size Dimensions also available*



Cotroceni Park Mall, Bucharest, Romania



Saint Paul the Apostle Catholic Church, OH, USA



Tile Line Production



# Products

## Pavers

Standard Dimensions				
Height × Length	Thickness			
	¾"	1¼"	1½"	2"
6" × 6"	✓	✓	✓	✓
8" × 8"	✓	✓	✓	✓
12" × 12"	✓	✓	✓	✓
16" × 16"	✓	✓	✓	✓
18" × 18"	✓	✓	✓	✓
24" × 24"	✓	✓	✓	✓
36" × 36"	✓	✓	✓	✓
12" × 24"	✓	✓	✓	✓
16" × 24"	✓	✓	✓	✓
12" × 36"	✓	✓	✓	✓
18" × 36"	✓	✓	✓	✓
24" × 36"	✓	✓	✓	✓
Ashlar Patterns	✓	✓	✓	✓
8"-14" × Random	✓	✓	✓	✓

All Cut-To-Size Dimensions also available



Private Residence, Israel



Yad V'Shem, Jerusalem, Israel



Biblical Zoo, Jerusalem, Israel



Private Residence, USA

# Products

## Veneers

### Thin Veneers

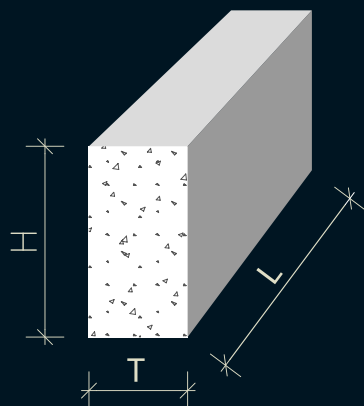
#### Recommended Dimensions

Height 6" - 16"

Length 12" - 36"  
or Free Length

Standard  
Thicknesses 3/4", 1 1/4"

All Cut-To-Size Dimensions also available



### Full Dimension Veneers

#### Recommended Dimensions

Height 6" - 24"

Length 12" - 48"  
or Free Length

Standard  
Thicknesses 2", 2.5", 3", 3 5/8", 4"

All Cut-To-Size Dimensions also available



Full Veneer - Mechanical anchor fixings



Private Residence, Israel



Private Residence, CA, USA



Torat Emet, OH, USA



Full Veneer - Mortar setting with securing ties



# Products

## Arches

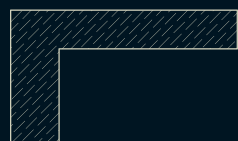


Saint Paul the Apostle Catholic Church,  
OH, USA

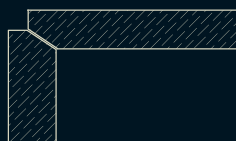


Hadassah Hospital, Jerusalem, Israel

## Corners and Quoins



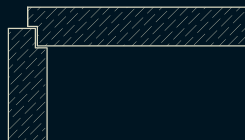
L-Shape



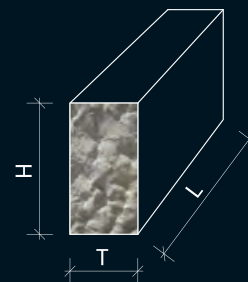
Quirk Miter



Miter



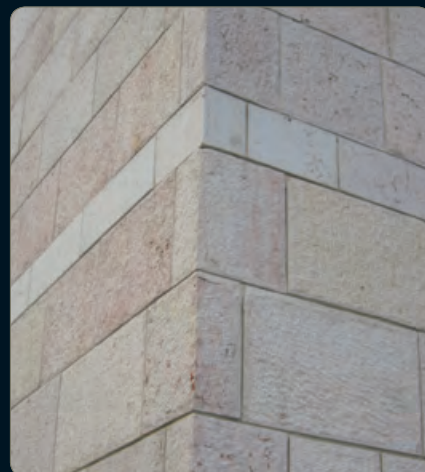
Double Rabbit Cut



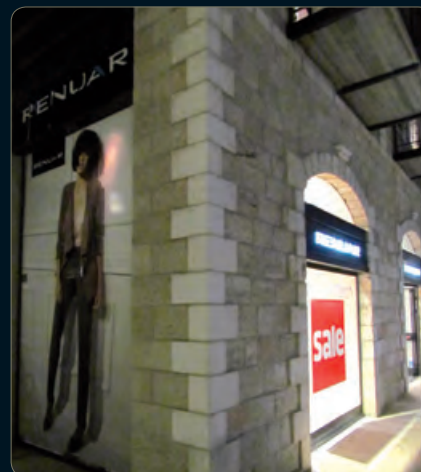
Chiseled Corner Edge



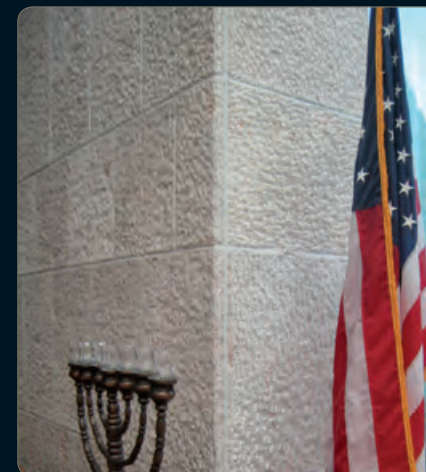
American Consulate, Jerusalem, Israel



Chiseled Corner Edge  
Hadassah Hospital, Jerusalem, Israel



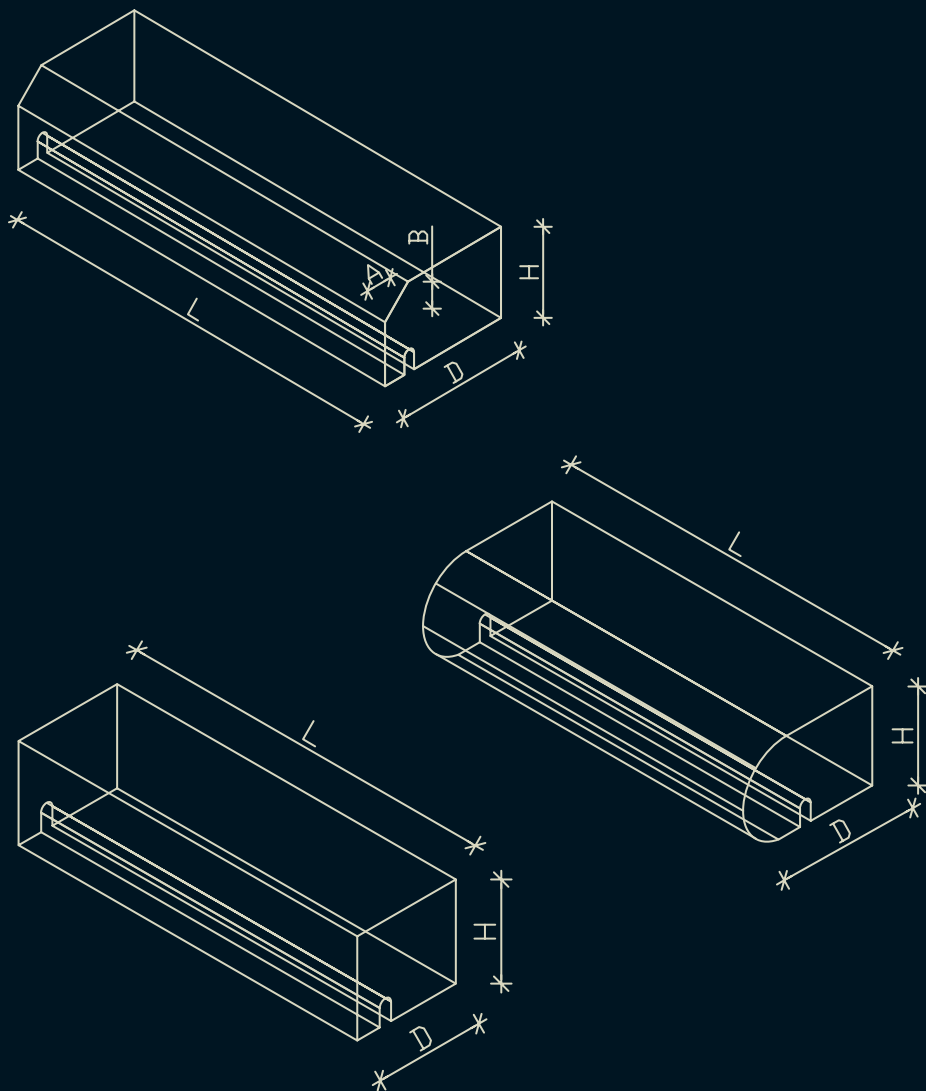
Mamilla-Alrov Quarter, Commercial &  
Residential, Jerusalem, Israel



JCC - Old Westbury, NY, USA

# Products

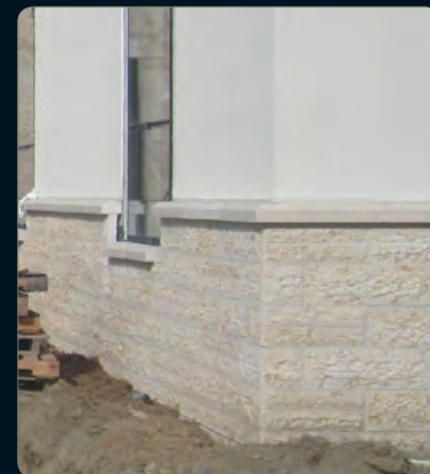
## Sills & Watertables



Yeshiva Darchei Torah, Queens, NY, USA



Torat Emet Synagogue, Columbus, OH, USA



Temple Beth El, Charlotte, NC, USA



## Coping & Pier Caps



Square Cap



Bayonne Golf Club, NJ, USA



Private Residence, Israel



Round Cap



Private Residence, NY, USA



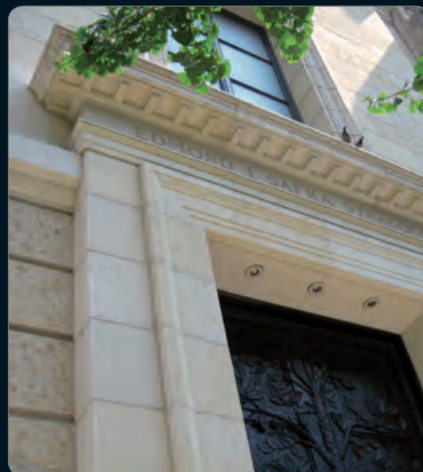
Technologic Garden, Jerusalem, Israel

# Products

## Window & Door Framings



Private Residence, Israel



Edmund Safra Synagogue, New York City, NY, USA



Mamilla Hotel, Jerusalem, Israel



Private Residence, NJ, USA



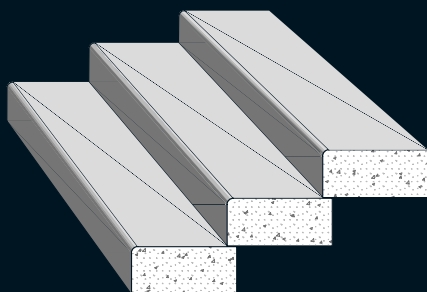
Private Residence, NJ, USA



Private Residence, Israel



## Stairs



### Anti-slip finishes



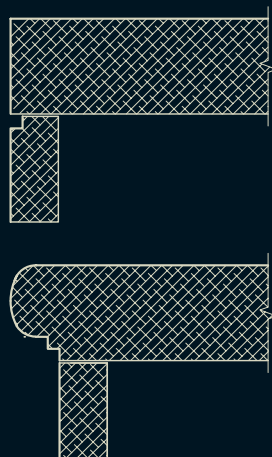
Aluminum Strips



Grooved Strips



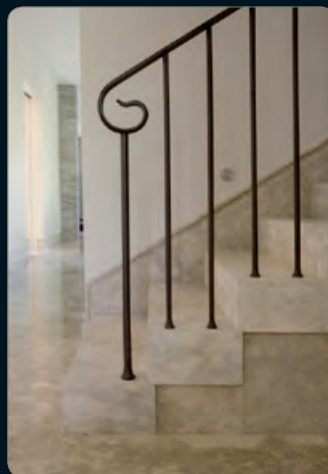
Bush Hammered Strip



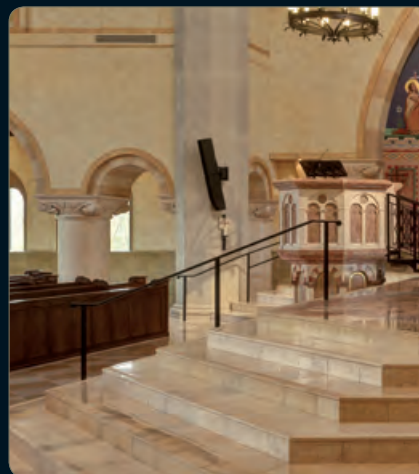
Private Residence, CT, USA



Radisson Hotel, Bucharest, Romania



Private Residence, Israel



Saint Paul the Apostle Catholic Church,  
OH, USA



Private Residence Israel

# Products

## Balustrades



Milwaukee Public Library, WI, USA

## Columns & Pilasters



Plaza Hotel, New York City, NY, USA



Private Residence, Israel



Plaza Hotel, New York City, NY, USA



Yeshiva Darchei Torah, Queens, NY, USA



# Products

## Moldings and Wainscot



Private Residence, NJ, USA



Private Residence, Israel

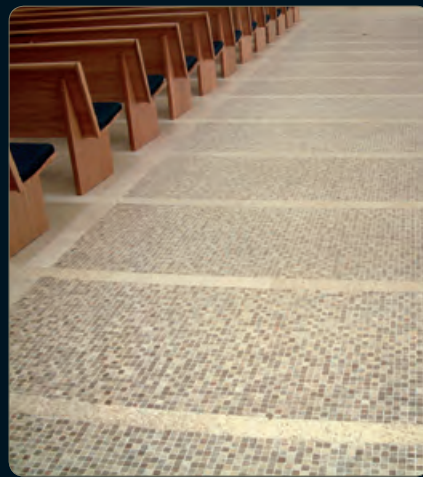


Private Residence, Israel



Private Residence, Israel

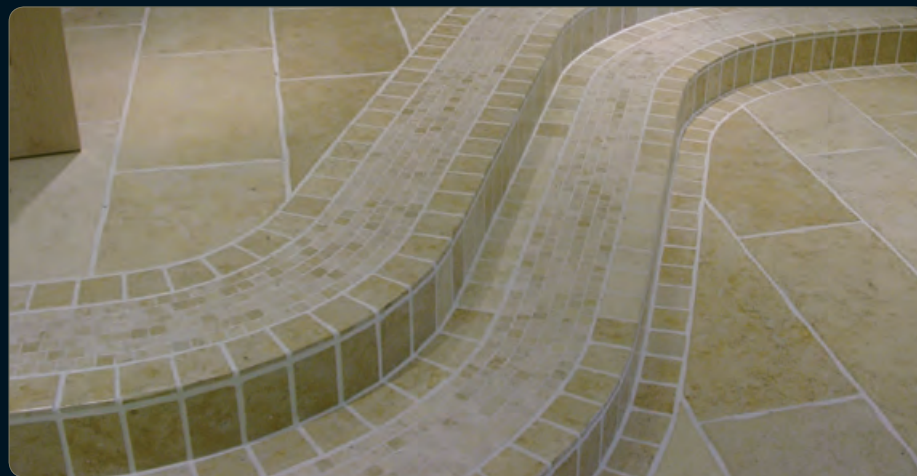
## Mosaic & Decor



Levy Chapel - US Naval Academy,  
Annapolis, MD, USA



Levy Chapel - US Naval Academy,  
Annapolis, MD, USA



Private Residence, London, UK

## Pool Decks



Private Residence, Israel



Private Residence, Israel



Private Residence, Bermuda



# Durable World Wide



Dependable in Every Climate

**Hospitality** USA: Plaza Hotel New York City, NY ♦ Pool and Spas Center, CA ♦ Intercontinental Hotel Chicago, IL ♦ Four Seasons Resort Jackson Hole, WY ♦ Radisson Hotel - Bucharest Bucharest, ROMANIA ♦ Plaza Hotel Antwerp, BELGIUM ♦ Caravelle Hotel VIETNAM ♦ Park Hyatt Hotel Saigon, VIETNAM ♦ ISRAEL: Dan Eilat Hotel, Eilat ♦ Herods Palace Hotel, Eilat ♦ The David Citadel Hotel, Jerusalem ♦ Hyatt Hotel, Jerusalem ♦ Princess Hotel, Eilat ♦ Isrotel Agamim, Eilat ♦ Dan Accadia Hotel, Herzliya ♦ Mishknot Shananim, Jerusalem ♦ Mamilla-Alrov Quarter Hotel, Jerusalem ♦ **Government** Virginia State Capitol VA, USA ♦ ISRAEL: The Israeli Knesset - Extension Jerusalem ♦ American Consulate, Jerusalem ♦ City Hall, Jerusalem ♦ Hadassah Hospital, Jerusalem ♦ **Education & Research** USA: American Committee for the Weizmann Institute of Science New York City, NY ♦ Metropolitan Egyptian Gallery New York City, NY ♦ NYU - 190 E 7th New York City, NY ♦ Simon Weisenthal Center & Museum Los Angeles, CA ♦ Carmichael Library Carmichael, CA ♦ Ramsey Cultural Center - Native American San Francisco, CA ♦ University of Baltimore Baltimore, MD ♦ Salt Lake City Library Salt Lake City, UT ♦ Milwaukee Public Library WI ♦ Solomon Schechter School St. Louis, MO ♦ Complexe Scolaire et Socio Culterel Paris, FRANCE ♦ South Africa Jewish Museum Cape Town, SOUTH AFRICA ♦ ISRAEL: University of Tel Aviv, Tel Aviv ♦ Yad V'Shem, Jerusalem ♦ The Science Park, Be'er Sheva ♦ Hebrew Union College, Jerusalem ♦ Opera Building in Golda Center, Tel Aviv ♦ Ort School Menahet, Jerusalem ♦ Yad Labanim, Migdal Haemek ♦ Auditorium Orchestra Building, Jaffa ♦ Archeology Dept Beit-Shean ♦ Beit Shimshon, Jerusalem ♦ Cultural Center, Ashkelon ♦ **Transit & Infrastructure** ISRAEL: Light Rail, Jerusalem ♦ Ben Gurion Airport, Tel Aviv ♦ Highway 6-Toll road ♦ Bridge of Strings (Calatrava) Jerusalem ♦ Supreme Court Bridge, Jerusalem ♦ Begin Road - Jerusalem ♦ Jaffa Gate Bridge, Jerusalem ♦ Sonol Fuel Station, Beit-Kama ♦ **Renovation** ISRAEL: Old Turkish Hotel, Be'er Sheva ♦ Mamilla-Alrov Quarter, Jerusalem ♦ City Hall Jerusalem ♦ **Office Buildings** USA: International Economics Institute Washington, DC ♦ Southbury Jewish Center Southbury, CT ♦ HYUNDAI Corporation Building Jongno-Gu, Seoul KOREA ♦ Dong Bu Building Seoul, KOREA ♦ 30 Hill Street SINGAPORE ♦ ISRAEL: Mount Hotzvim - Central House Jerusalem ♦ Conference Center Shfaim ♦ Business Park, Hertzliya ♦ El-Ad Jerusalem ♦ Festivities' Hall Hadar Dimol, Ramat Gan ♦ **Religious Institutes** USA: Edmund Safra Synagogue New York City, NY ♦ Chabad House - Upper East Side New York City, NY ♦ Levy Chapel - US Naval Academy Annapolis, MD ♦ JCC - Old Westbury, 11568 NY ♦ JCC - Staten Island NY ♦ Yeshiva Boys School - Simon Wiesenthal Center & Museum Los Angeles, CA ♦ Cathedral of our Lady Los Angeles, CA ♦ New Square Temple NJ ♦ Torat Emet Synagogue Columbus, OH ♦ Church of the Transfiguration Orleans, MA ♦ Temple Emanuel Greensboro, NC ♦ Temple Israel, Omaha, NE ♦ Central Shul Melbourne, Australia ♦ **Retail** USA: Plaza Hotel Mall New York City, NY ♦ Hickey Freeman - 5th Ave. New York City, NY ♦ 5th Avenue Stores & Restaurants Naples, FL ♦ Liberec Mall Liberec, CZECH REPUBLIC ♦ Cotroceni Park Mall Bucharest, ROMANIA ♦ ISRAEL: Mamilla-Alrov Quarter Mall, Jerusalem ♦ Business Park, Hertzliya ♦ The Marina Project, Herzliya ♦ Kfar Saba Mall, Kfar Saba ♦ Or Yehuda Mall, Or Yehuda ♦ Polgat Net National Chain ♦ Malha Mall, Jerusalem ♦ Factory 54 Tel Aviv ♦ Golf - Kitan National Chain ♦ **Residential Buildings** USA: Arlington Suites Arlington, NY ♦ SOHA New York City, NY ♦ 555 West New York City, NY ♦ Le Patio Cap De Antibes, FRANCE ♦ Residential building under construction Mapo-Ku, Seoul, KOREA ♦ Villa Jerome ANGOLA ♦ Ferdinan Bucharest, ROMANIA ♦ ISRAEL: Mamilla-Alrov Quarter Residential, Jerusalem ♦ "Kfar David" - Mamilla, Jerusalem ♦ Presidential Gardens, Jerusalem ♦ Jaffa Court, Jaffa ♦ Sheinman Street Bavly, Tel Aviv ♦ Pninat Hasharon, Hod Hasharon ♦ Pninat Tzfat ♦ USA: Bayonne Golf Club, NJ ♦ Salt Lake City Library Salt Lake City, UT ♦ Golf Club Cap De Antibes, FRANCE ♦ ISRAEL: Biblical Zoo, Jerusalem ♦ Adjami Neighborhood, Jaffa ♦ Technological Garden, Jerusalem ♦ Kfar David, Mamilla, Jerusalem ♦ City Hall, Jerusalem ♦ Yad V'Shem, Jerusalem ♦ Bell Garden, Jerusalem ♦ Hebrew Union College, Jerusalem



## ASTM C-568 Standard Specification for Limestone Dimension Stone

Limestone	Water Absorption ASTM C97	Density (lbs./cft.) ASTM C97	Modulus of Rupture (PSI) ASTM C99	Abrasion Resistance EN 13892-3
High Density Class III Standard	3% Maximum	160 Minimum	1000 Minimum	
Benjamin Gold	1.2%	165	2013	2.35
Benjamin Grey	1.7%	165	1622	3.26
Jerusalem Grey	0.2%	167	1812	1.8
Hebron Gold	1.2%	163	1343	3.37
Hebron White	0.9%	167	1465	3.21
Galil Gold	1.03%	163	1762	2.89
Pearl	1.23%	162	1841	2.72
Karina	1.3%	162	1308	3.32
Jerusalem Red	1.3%	170	1870	1.62



JERUSALEM  
GARDENS

STONE WORKS LTD.  
NATURAL STONE  
SINCE 1980



### Jerusalem Gardens Stone Works Ltd.

Industrial Zone Har-Tuv B  
Beit-Shemesh 99000, Israel

Tel (US): (646) 934 1800 or (646) 519 2445  
Tel (ISR): +972 2 9922 113 | Fax: +972 2 9922 114

usa@jgsw-group.com  
info@jgsw-group.com

www.jgsw-group.com

