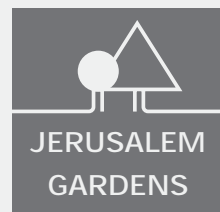




**The beauty of natural stone**

**JERUSALEM GARDENS STONE WORKS Ltd.**

- Company Information
- Portfolio—Stone Projects
- Products—Natural Stone
- Project List
- Index



Stone Works Ltd.  
since 1980

# Company Profile

**Jerusalem Gardens Stone Works** has been engaged in building, manufacturing, supplying, selling and marketing **natural stone**, internationally and domestically, since 1980.

Jerusalem Gardens Stone Works is a family owned company. The General Manager is Mr. Jacob Mordoch, who has been a part of the stone industry for the past thirty years. During this time, Mr. Mordoch has been involved professionally in many major stone projects throughout the world.

The company's corporate office and factories are located in Israel.

JGSW supplies high standard **natural stone** for **commercial** and **residential** projects worldwide. JGSW has acquired extensive experience by supporting numerous projects with its stone capabilities, and has taken part in large scale jobs with special adaptations as required.

JGSW provides one-stop-shopping services and offers its clients everything from **planning and manufacturing, to supplying and installing the completed work**. The company's professional staff includes architects, project managers, stone specialists and stone consultants.

JGSW maintains an **In-House Architectural Department** in order to service its overseas clients. By having its architectural department in-house, JGSW maintains the highest degree of flexibility and fastest response time, in order to meet the client's demands and needs.

**Jerusalem Stone** is the company's leading brand, and is available in different shades and a wide variety of finishes and sizes.

In addition, JGSW supplies raw materials from around the world: **Granite, Marble, Limestone, Travertine, Onyx**.

JGSW offers its clients a high level of **Value Engineering**, in order to ensure the project budget is met. The company's capabilities in this process are based among other things on our **worldwide operational centers** that provide us with high accessibility to every kind of natural stone found throughout the world.

Among JGSW's projects are the new **Plaza Hotel** in New York City, the **Edmund Safra Synagogue** in Manhattan, the **InterContinental Hotel** in Chicago, the **Uriah Levy Chapel** at the **US Naval Academy** in Annapolis, the Salt Lake City and Milwaukee **Public Libraries**, the **Old Mamilla Quarter** in Jerusalem and many more.



**Organisational membership:** Marble Institute of America \* Association of Contractors & Builders in Israel \* Manufacturers' Association of Israel \* Israel Stone Manufacturers' Association \* Israeli Initiative for a Sustainable Built Environment \* U.S. Green Building Council.



Edmund Safra Synagogue, NY, USA. Special large cubic stone elements. Indoor — outdoor.  
Stone: Benjamin Gold. Finish: Split face, Rouge chisel, Bush hammed, Sand blasted.



# World Wide Stone Project

## Natural Stone supplying — Internationally and domestically, since 1980

Plaza Hotel New York City, NY USA • Pool and Spas Center CA, USA • Intercontinental Hotel Chicago, IL USA • Four Seasons Resort Jackson Hole WY, USA • Radisson Hotel – Bucharest Bucharest, ROMANIA • Plaza Hotel Antwerp, BELGIUM • Caravelle Hotel VIETNAM • Park Hyatt Hotel Saigon, VIETNAM • Dan Eilat Hotel Eilat, ISRAEL • Herods Palace Hotel Eilat, ISRAEL • The David Citadel Hotel Jerusalem, ISRAEL • Hyatt Hotel Jerusalem, ISRAEL • Princess Hotel Eilat, ISRAEL • Isrotel Agamim Eilat, ISRAEL • Dan Accadia Hotel Herzliya, ISRAEL • Mishknot Shananim Jerusalem, ISRAEL • Mamilla-Alrov Quarter Hotel Jerusalem, ISRAEL • American Committee for the Weizmann Institute of Science New York City, NY USA • Metropolitan Egyptian Gallery New York City, NY USA • NYU – 190 E 7<sup>th</sup> New York City, NY USA • Simon Weisenthal Center & Museum Los Angeles, CA USA • Carmichael Library Carmichael, CA USA • Ramsey Cultural Center – Native American San Francisco, CA USA • University of Baltimore Baltimore, MD USA • Salt Lake City Library Salt Lake City, UT USA • Milwaukee Public Library WI, USA • Solomon Schechter School St. Louis, MO USA • Complexe Scolaire et Socio Culterel Paris, FRANCE • South Africa Jewish Museum Cape Town, SOUTH AFRICA • University of Tel Aviv Tel Aviv, ISRAEL • Yad V'Shem Jerusalem, ISRAEL • The Science Museum Jerusalem, ISRAEL • Hebrew Union College Jerusalem, ISRAEL • Opera Building in Golda Center Jerusalem, ISRAEL • Ort School Menahet Jerusalem, ISRAEL • Yad Labanim Migdal HaEzer Jerusalem, ISRAEL • Beit Shimon Auditorium Orchestra Building Jaffa, ISRAEL • Archeology Department Beit Shimon Jerusalem, ISRAEL • Cultural Center Ashdod Beit Shimon Jerusalem, ISRAEL • Edmund Safra Synagogue New York City, NY USA • Chabad Lubavitch New York City, NY USA • US Naval Academy Annapolis, MD USA • US Naval Academy Chapel – US Naval Academy Annapolis, MD USA • JCC – Staten Island Yeshiva Boys School – New York City, NY USA • Simon Wiesenthal Center Los Angeles, CA USA • New Square Temple Mount Synagogue Los Angeles, CA USA • Columbus, OH USA • Chabad Lubavitch Columbus, OH USA • Old Turkish House Jerusalem, ISRAEL • City Hall Jerusalem Jerusalem, ISRAEL • “Kfar David” Jerusalem, ISRAEL • “Kfar David” under construction Mapo-Ku Jerusalem, ISRAEL • Sheinman Bucharest, ROMANIA • Sheinman Bucharest, ROMANIA • Plaza Hotel Bucharest, ROMANIA • Plaza Hotel Bucharest, ROMANIA • Liberec Mall Liberec, CZECH REPUBLIC • Polgat Net National Chain, ISRAEL • Restaurants Naples, FL USA • Factory 54 Tel Aviv, ISRAEL • Golf – Kitan National Chain, ISRAEL • Light Rail Jerusalem, ISRAEL • Ben Gurion Airport Tel Aviv, ISRAEL • Highway 6 – Toll road ISRAEL • Bridge of Strings (Calatrava) Jerusalem, ISRAEL • Supreme Court Bridge Jerusalem, ISRAEL • Begin Road – Jerusalem Jerusalem, ISRAEL • Jaffa Gate Bridge Jerusalem, ISRAEL • Sonol Fuel Station Beit-Kama, ISRAEL • International Economics Institute Washington, DC USA • HYUNDAI Corporation Building Jongno-Gu, Seoul KOREA • Dong Bu Building Seoul, KOREA • 30 Hill Street SINGAPORE • Mount Hotzvim – Central House Jerusalem, ISRAEL • Conference Center Shfaim, ISRAEL • Southbury Jewish Center Southbury, CT USA • Business Park Hertzlia Herzliya, ISRAEL • El-Ad Jerusalem, ISRAEL • Festivities’ Hall Hadar Dimol Ramat Gan, ISRAEL • Virginia State Capitol VA, USA • The Israeli Knesset - Extension Jerusalem, ISRAEL • American Consulate Jerusalem, ISRAEL • City Hall Jerusalem Jerusalem, ISRAEL • Hadassah Hospital Jerusalem, ISRAEL • Bayonne Golf Club NJ, USA • Golf Club Cap De Antibes, FRANCE • Biblical Zoo Jerusalem, ISRAEL • Adjami Neighborhood Jaffa, ISRAEL • Salt Lake City Library Salt Lake City, UT USA • Technologic Garden Jerusalem, ISRAEL • Kfar David, Mamilla Jerusalem, ISRAEL • City Hall Jerusalem Jerusalem, ISRAEL • Yad V'Shem Jerusalem, ISRAEL • Bell Garden Jerusalem, ISRAEL • Hebrew Union College Jerusalem, ISRAEL



Cotroceni Mall, Bucharest, Romania.

Supplied 60,000 sq. m natural stone including: Shop drawings & Cutting tickets • Detailed storage plan according to stone location on site • Planning of the anchoring system & implementing specification • QC by JGSW workers in the original country of the stone • On site guidance, immediate solutions and QC • A wide logistics lineup to support all project needs • Daily connection with site manager.

Stone: Delicato, Finish: Honed.

# JGSW Production

## Main Factory — Israel.

JGSW's main factory is located in the center of Israel, at the Har-Tuv Industrial Zone B near Beit-Shemesh (20 min from the Ben-Gurion Airport).

The JGSW factory is fully equipped, and has the capacity to manufacture a large range of products such as: cut to size products, textured tiles, cubic elements, traditional Israeli chiseled stone, biblical finishes, special items, decorative items, mosaics, kitchen and bath products, pools and landscaping, antique finishes, modern flooring, moldings, decors and many other custom made products.

Our products are made from stone blocks and slabs taken from at least 15 quarries around Israel.

## JGSW guarantees strict quality control over:

- Raw material supplied.
- Finished products (both mass production and cut-to-size).
- Professional packaging (including bulk packaging).

To meet its clients' needs, JGSW has adapted its machines to both American and European standards.

Our technologies preserve the tradition of thousands of years of hand-made finishes made to fit modern designs. Always attentive to our clients, we are continuously improving. We make it our policy to inspire a sense of trust and reliability, based on our long years of experience.

## Secondary Factories.

In addition to its main factory, JGSW operates natural stone factories in different countries so as to be able to provide its clients with the largest possible variety of natural stone and finishes.

The different factories allow the Company to offer a wide range of products while retaining its extremely fast delivery time.

JGSW supplies **Granite, Marble, Limestone, Travertine, Onyx** and other natural stones from different factories according to project needs.

At all times, **quality control teams** are assigned to all production lines in order to maintain the highest standards of stone production quality. Our QC teams consist of engineers and operation managers who supervise all of our production lines around the world.







Moldings production at the JGSW factory.



Mosaic production in China.



JGSW factory.



# Architectural & Engineering Department

JGSW maintains an In-House Architectural Department in order to service its clients.

All shop drawings are prepared in-house in coordination with production, in order to achieve maximum efficiency to meet the project's requirements. An interactive process of shop drawings preparation takes place between the project's architect and JGSW architects using industry- standards graphic software.

**Services:**

- Take Off
- Shop Drawings
- Cut Tickets
- Installation Plans & Installation details

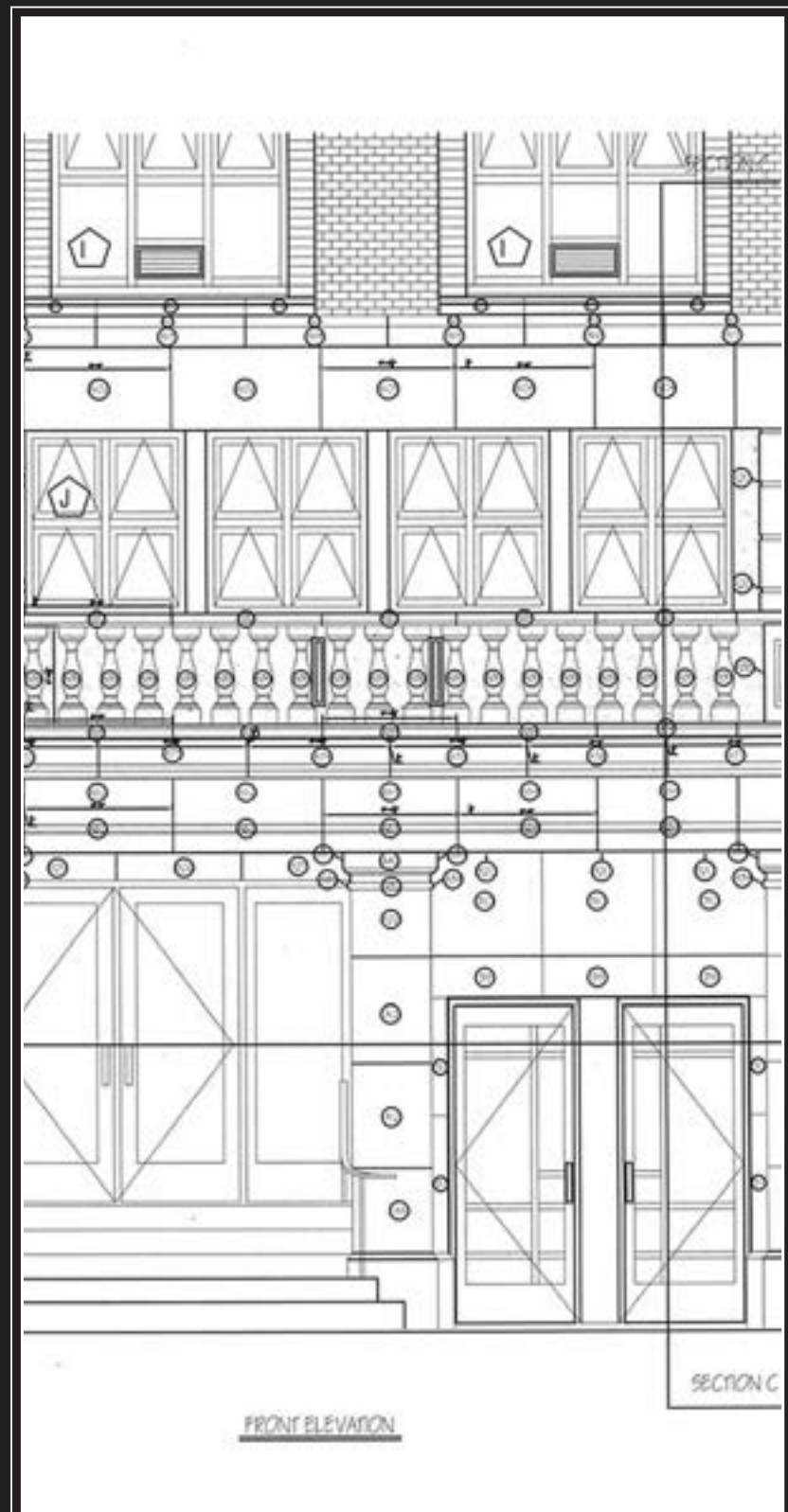
**Project Support Services:**

- 3D representation of stone for Building Information modeling (BIM) & Integrated Project Delivery (IPD).

**Preconstruction service:**

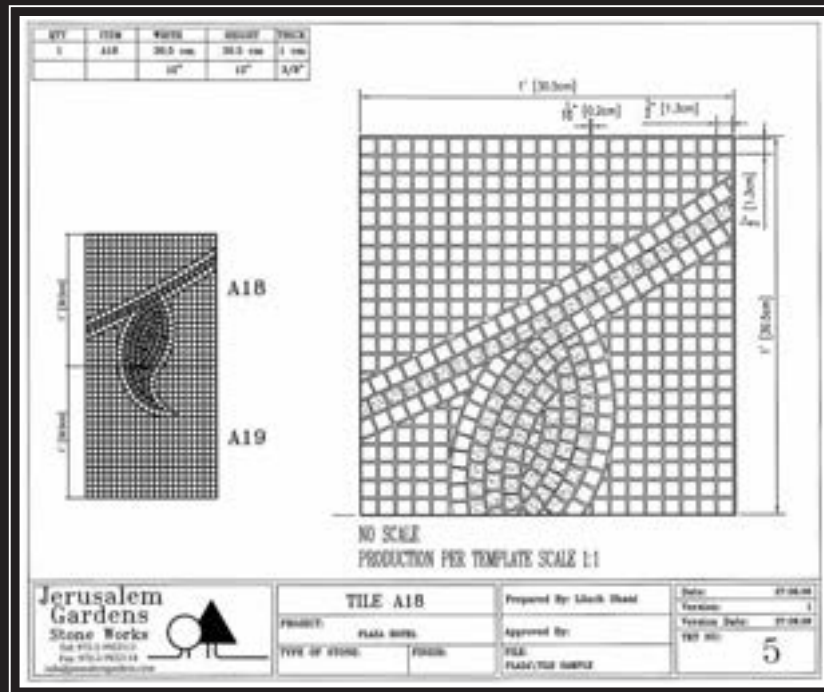
- Design – Assist
- Stone Consolation

To receive a full set of professional architectural information & services, please contact us at: [info@jerusalemgardens.com](mailto:info@jerusalemgardens.com)

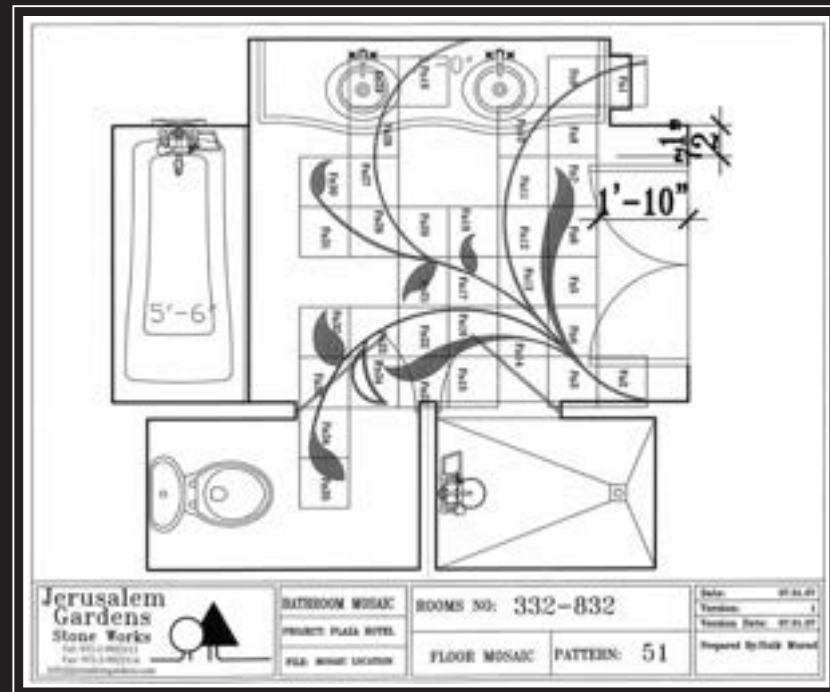


Elevation — Assembly plan. "Habad House", NY, USA.

# Architectural & Engineering



Production plan.



Installation plan.

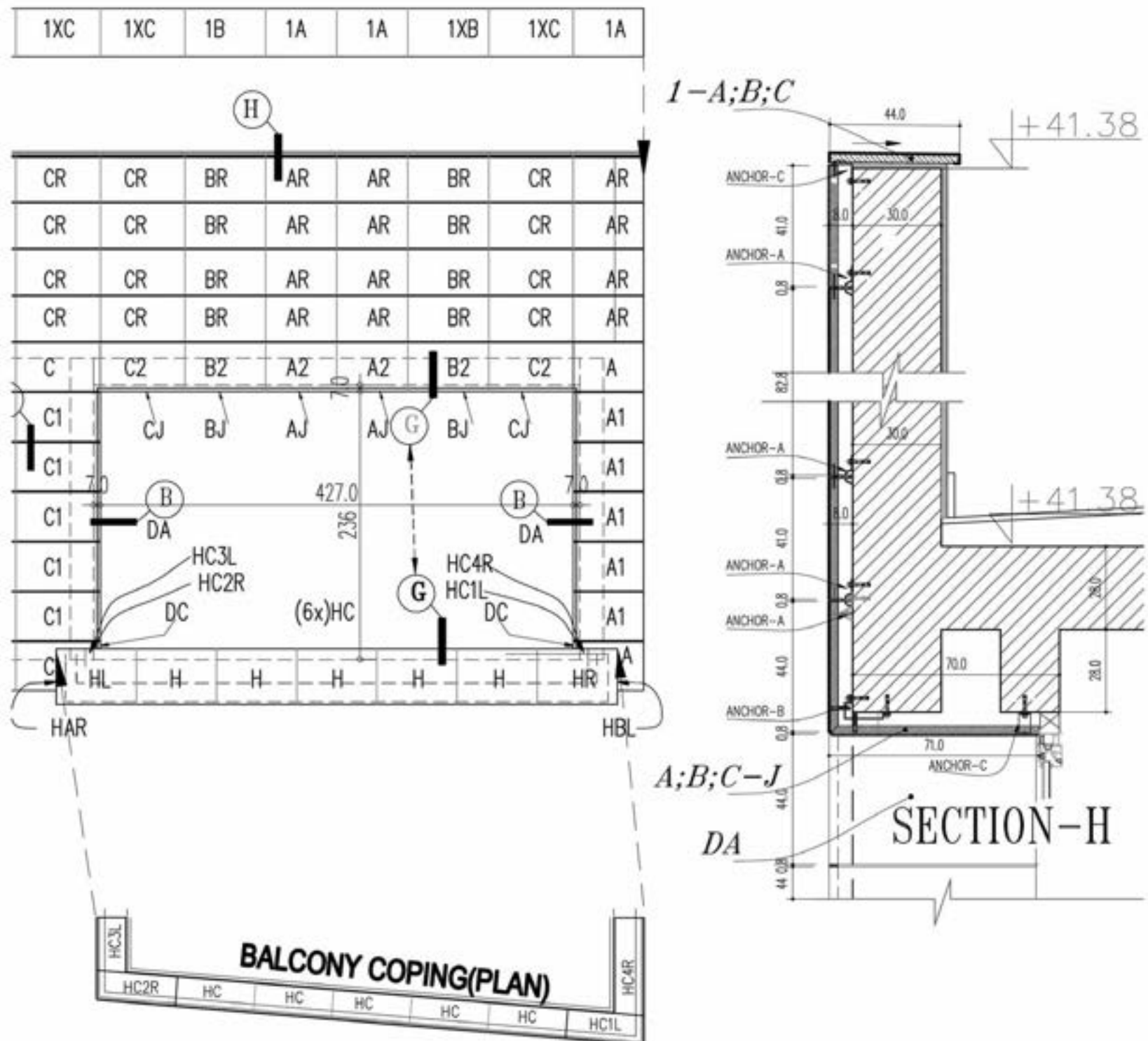


Plan QC at the factory.



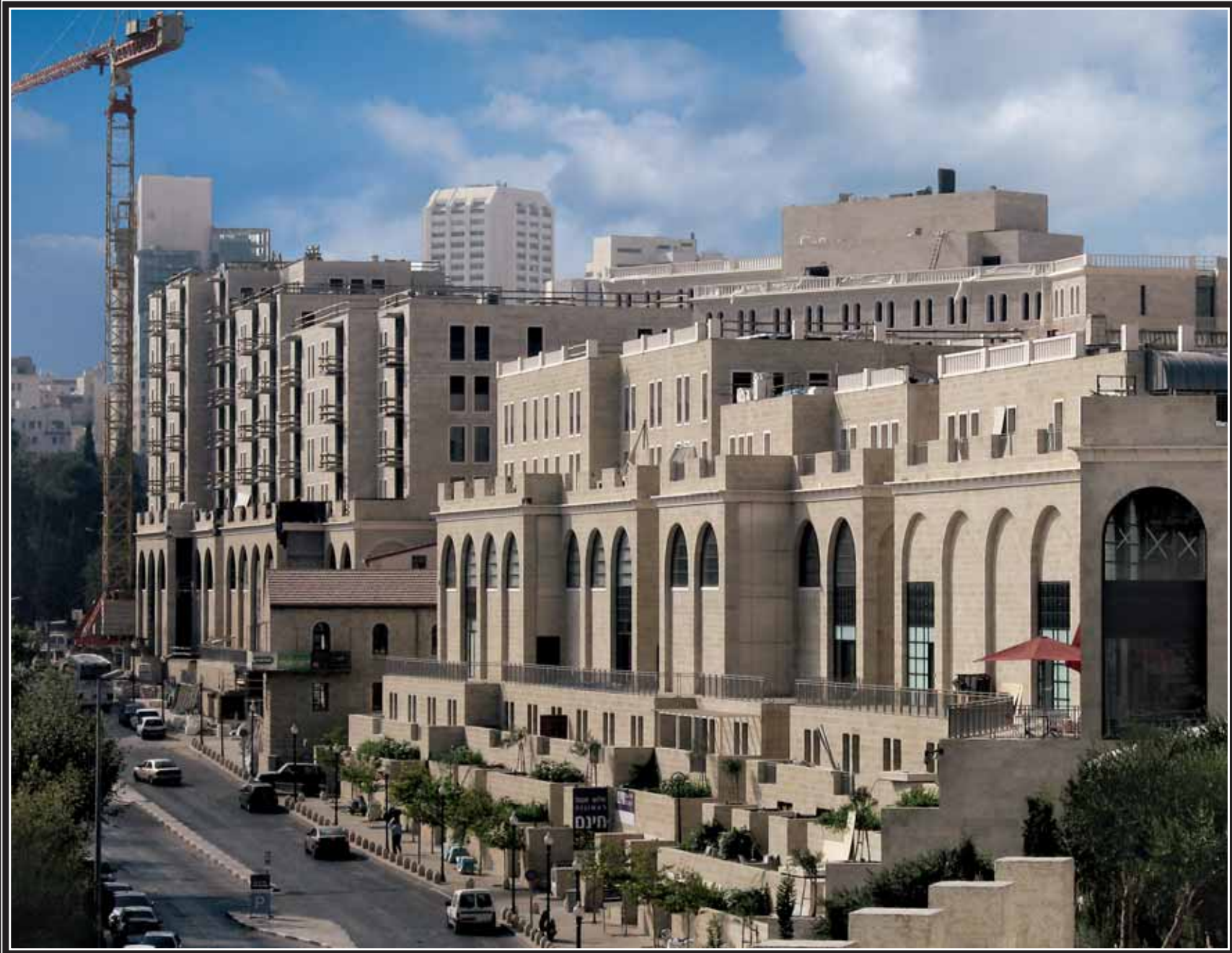
Finish floor at site.





# Building Support & Installation

In addition to supplying and installing the stone, JGSW leads the project with its team of professionals from the very first planning steps all the way through to the final completion of the project. This includes: stone specifications, stone planning, shop drawings, anchor systems, installation details, stone-treatment materials, stone installation systems, on-site professional support.



Installation & supply: Mamilla, Jerusalem. Stone: Benjamin Gold. Finish: Light Chiseled.





Supply & Installation: David Village, HUC, Shimshon House, Jerusalem. Stone: Benjamin Gold. Finish: Light Chiseled.



JCC, Staten Island, NY, USA. Stone: Benjamin Gold.



# Green Building— Jerusalem Stone



The LEED® (Leadership in Energy and Environmental Design) Green Building Rating System is the nationally accepted benchmark for the design, construction, and operation of high performance green buildings. When pursuing LEED Certification, JGSW assists you in attaining LEED credits.

LEED credits are based on the overall building design, construction and delivery to owner.  
All components referring to a given category must be considered when assessing point compliance.

LEED-NC (LEED for New Construction projects) is the most widely used green building rating system in the US. LEED-NC emphasizes six categories for environmental improvement:

1. Sustainable Site
2. Water Efficiency
3. Energy and Atmosphere
4. Indoor Environmental Quality
5. Materials and Resources
6. Innovation in Design

For more information regarding specific point attaining for your project using Jerusalem stone please contact our engineering department at: [info@jerusalemgardens.com](mailto:info@jerusalemgardens.com)

- \* Jerusalem Stone contributes to Green Building.
- \* Jerusalem Stone is a natural product with an enduring life cycle.
- \* Jerusalem Stone is a durable and low-maintenance product.
- \* The long life span and minimal upkeep required to keep Jerusalem Stone beautiful make ongoing energy requirements minimal.
- \* Jerusalem Stone is an abundant resource that can be 100% recycled\*.
- \* Jerusalem Stone is a highly sustainable material.
- \* ASTM standard considers the stone density as High Density range.
- \* Jerusalem Stone has been linked to improved indoor air quality and can contribute to greater energy efficiency.
- \* JGSW manufacturing process includes extensive water recycling system as well as a waste recycling system.
- \* Jerusalem Stone contains no hazardous materials.
- \* Jerusalem Stone requires only natural cleaners for maintenance.
- \* Production process contains only natural materials and no chemicals.
- \* Most of the waste from production process is reused for different products and different industries.
- \* Jerusalem Stone cladding helps maintain a comfortable indoor temperature while using less energy.
- \* Using Jerusalem stone which has been salvaged or reclaimed.
- \* Stone can be ground up and used as aggregate in roads.

All information stated above is a recommendation and professional consultation is needed in order to determine final scoring.



"Mishkenot Shaananim", Jerusalem.





Mamilla, Alrov Quarter, Jerusalem, Israel. Renovation of an old building in Jerusalem. Each stone was assigned a number before dismantling the building and was reinstalled on the new building according to the numbers.



# Portfolio

JGSW specializes in cut-to-size projects for both commercial and residential needs around the world.

JGSW offer extensive experience in supplying projects with stone sculpturing capabilities, large scale works, and special adaptations as required.

- Hospitality
- Government
- Education & Research
- Transit & Infrastructure
- Renovation
- Office Buildings
- Religious Institutes
- Retail
- Residential Buildings
- Pools
- Landscape
- Private Residences

# Hospitality



Plaza Hotel lobby, NY, USA.

Walls, floors, stairs, bathrooms, elevators, bar, reception, special elements. Rooms — bathrooms mosaic, fireplace. Commercial area: floors, fountains. Supplied of natural stone: Mosaic, special elements, floor & cladding, including: Shop drawings & Cutting tickets • Stone storage near the site • Specification • QC by JG workers in the original country of the stone • On site guidance, immediate solutions and QC • A wide logistics lineup to support all project needs • Daily connection with site manager. Floor Stone: Spider Gold, Columns: Pearl. Finish: Honed.



# Hospitality



Radisson Hotel, Bucharest, Romania. Floors, stairs, bathrooms, elevators, fountains, landscape. Stone: Atex Grey.





Dan Hotel, Eilat, Israel. Stone: Canaan Gold. Finish: Interior — Tavor, Landscape — Natural.

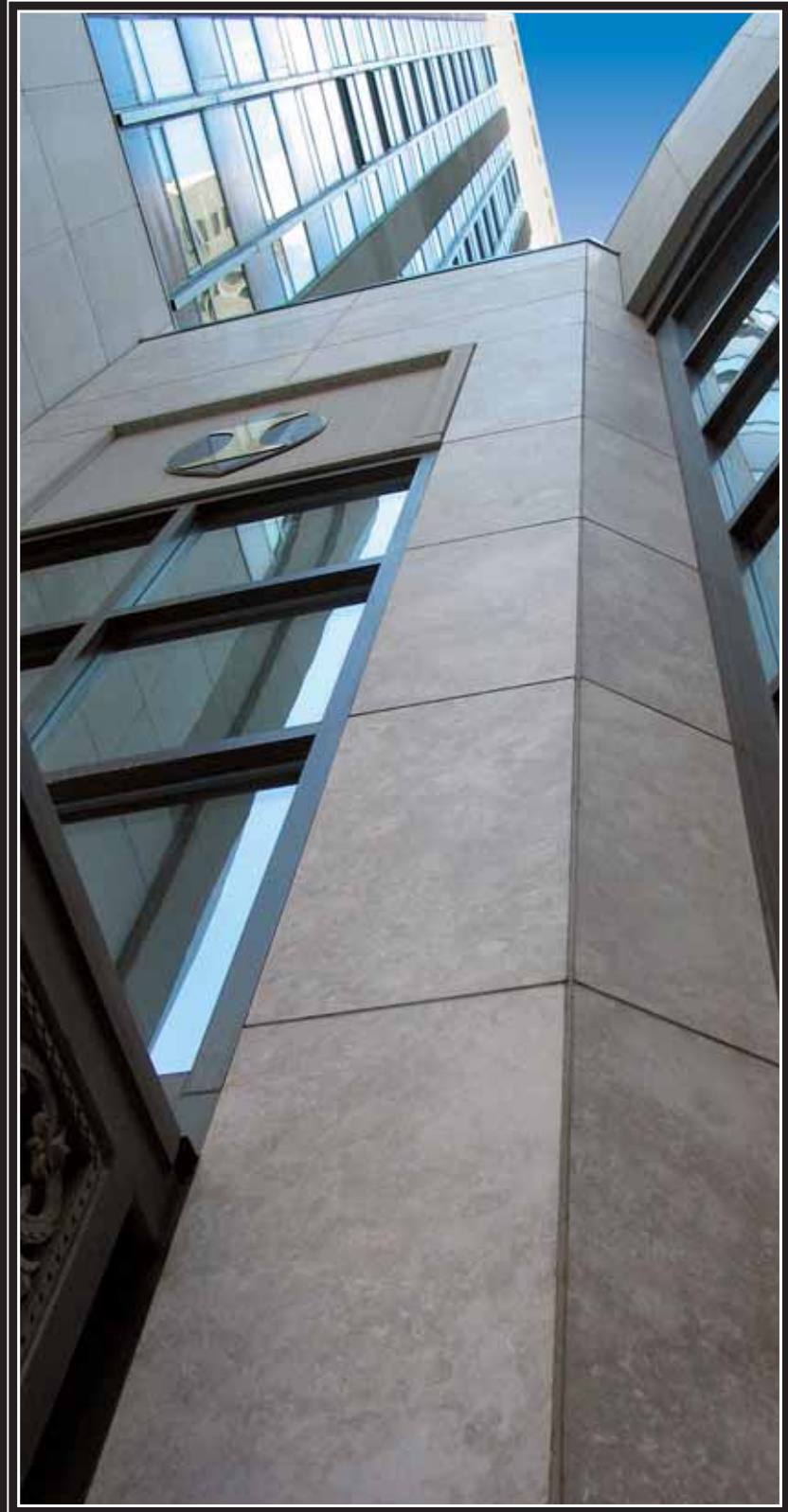


# Hospitality

JGSW specializes in hotel projects around the world. The company offers comprehensive service from planning and design through supplying and site management.

JGSW offers special stone products for Kitchens and Baths, Pools and landscape, Special flooring for lobbies and other public areas, fireplaces, sinks, moldings, mosaics and more.

All projects are accompanied by professional teams, our in-house architectural department, on-site management and production management at the factories.



InterContinental Hotel, Chicago, USA. Supply & Special stone cutting, indoor — outdoor. Stone: Ramon Grey.





Mamilla Hotel, Jerusalem. Stone: Benjamin Gold. Finish: Light chiseled.

# Government Buildings



The Jerusalem City Hall cut-to-size stone. Stone: Benjamin Gold. Finish: Light Chiseled.



American Consulate, Jerusalem, Israel. Stone: Benjamin Gold. Finish: Light Chiseled.



# Education & Research



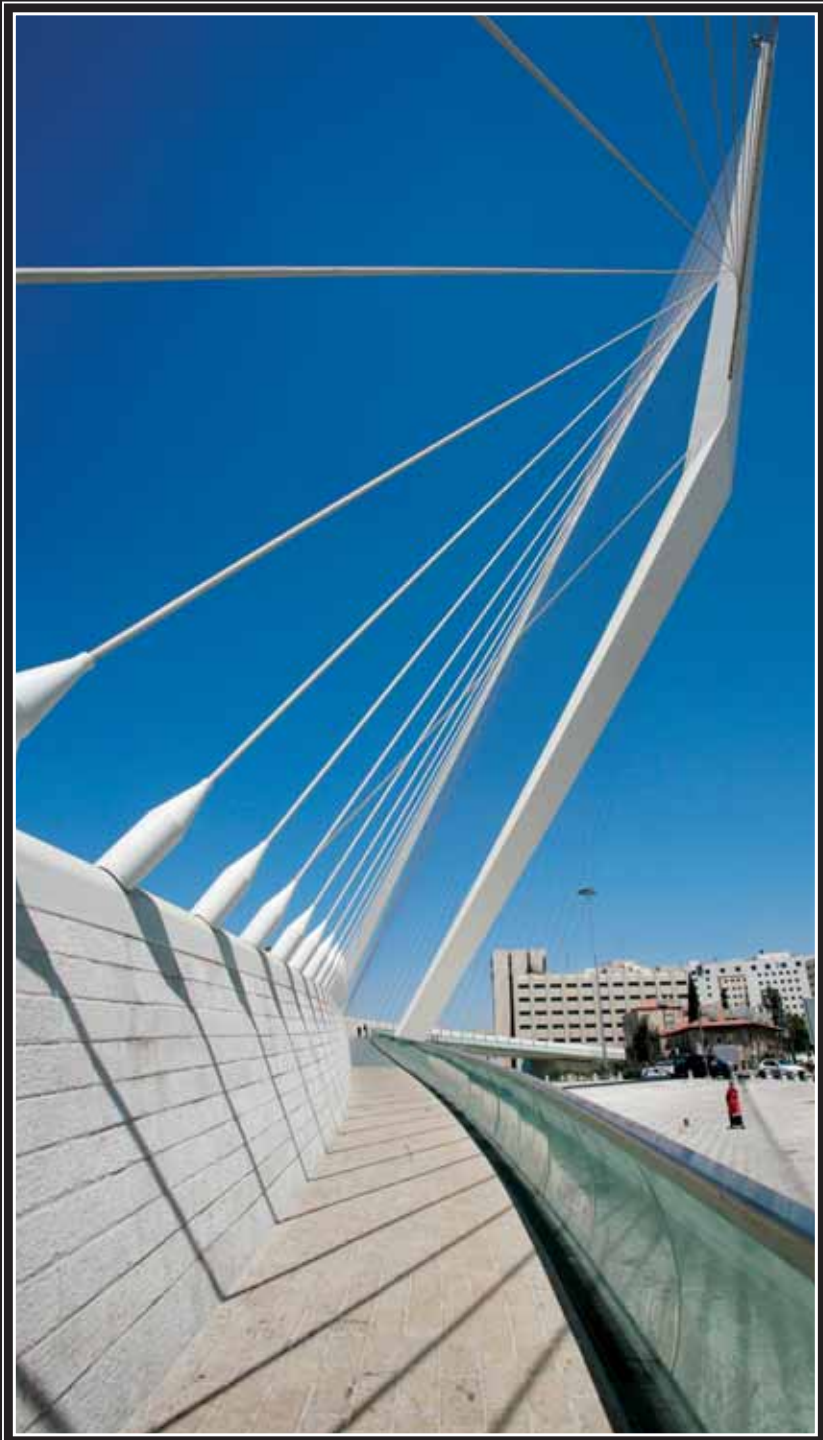
Salt Lake City, Public Library, USA. Stone: Benjamin Gold parquet style.



School, Paris, France. Stone: Hebron Cream.



# Transit & Infrastructure



Bridge of Strings (Calatrava) , Jerusalem, Israel. Stone: Ramon Grey.



Ben Gurion Airport, Israel. Stone: Galil Gold.



Supreme Court Bridge, Jerusalem, Israel. Stone: Hebron Cream.





Light Train, Jaffa Street, Jerusalem, Israel. Installation & supply: 60,000 sq. m, Granite stone.



# Renovation



Mamilla, Alrov Quarter, Jerusalem, Israel. Renovation of an old building in Jerusalem. Each stone was assigned a number before dismantling the building and was reinstalled on the new building according to the numbers.



# Office Buildings



Stone: Canaan Pink. Finish: Natural. Germany.



International Economics Institute, Washington, DC, USA.  
Stone: Galil Gold.



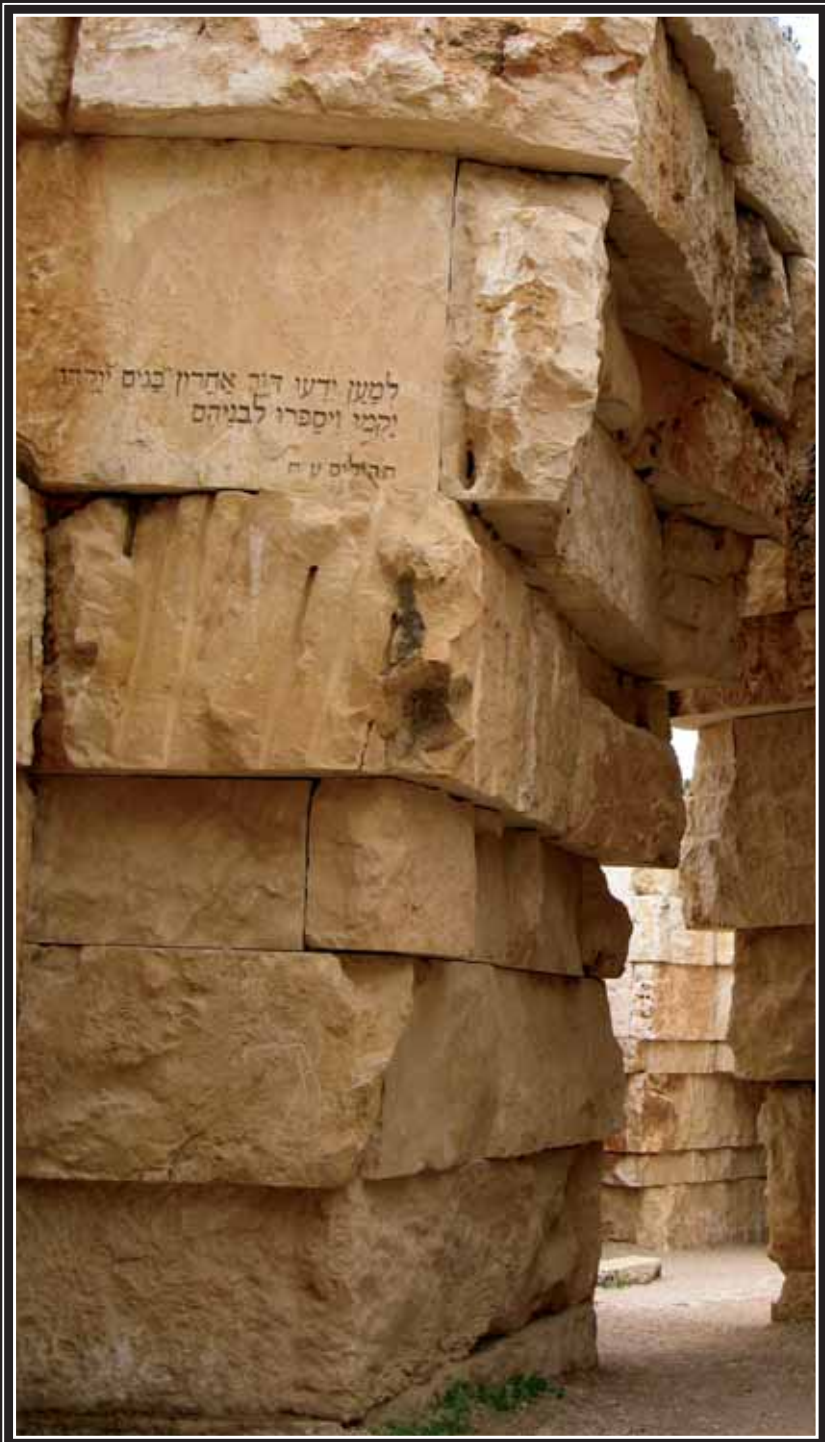
Dong Bu Building, Seoul, Korea. Stone: Galil Gold.



# Religious Institutes

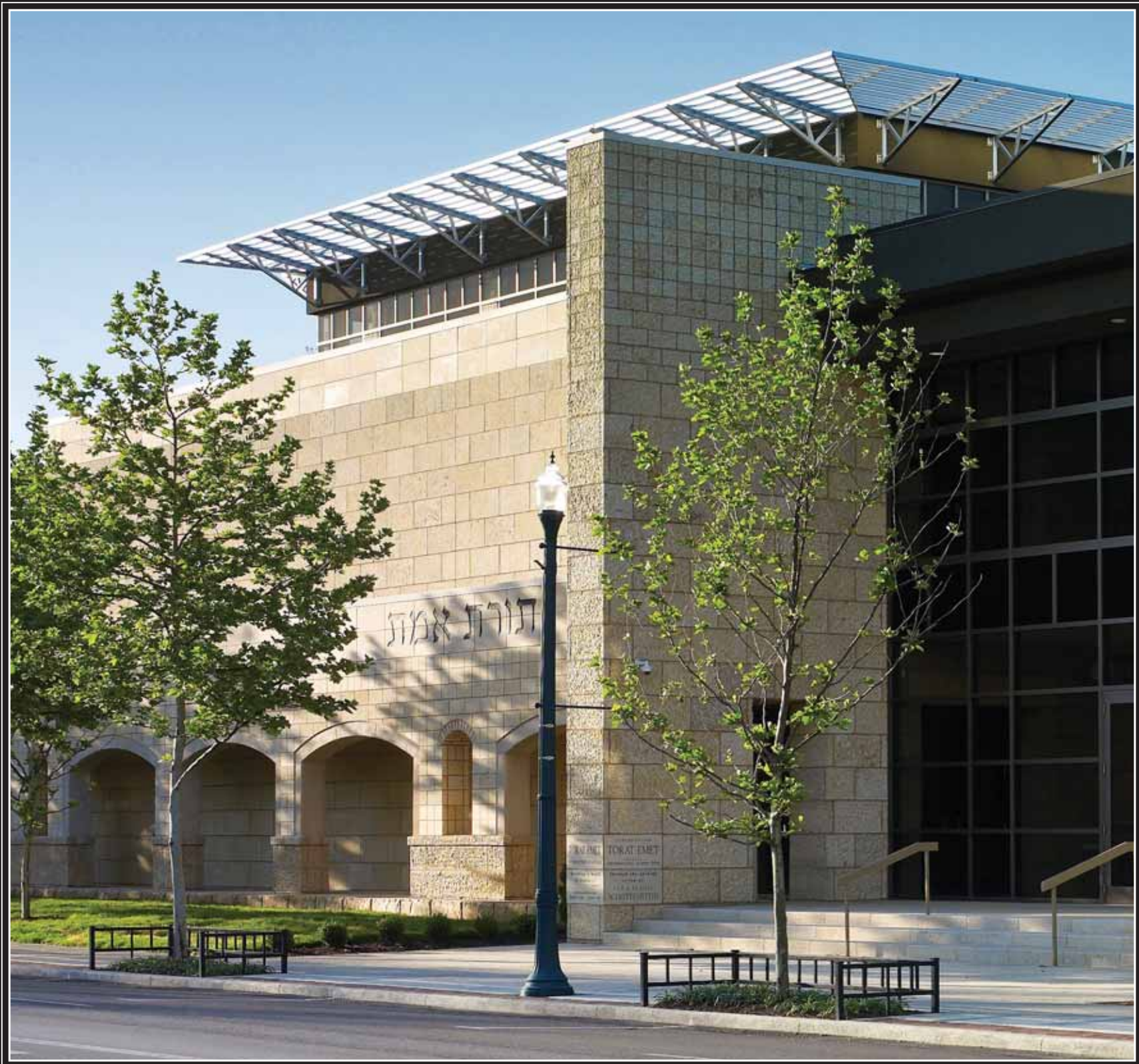


Edmund Safra Synagogue, NY, USA. Stone: Benjamin Gold.



"Yad Vashem" memorial center, Jerusalem, Israel.





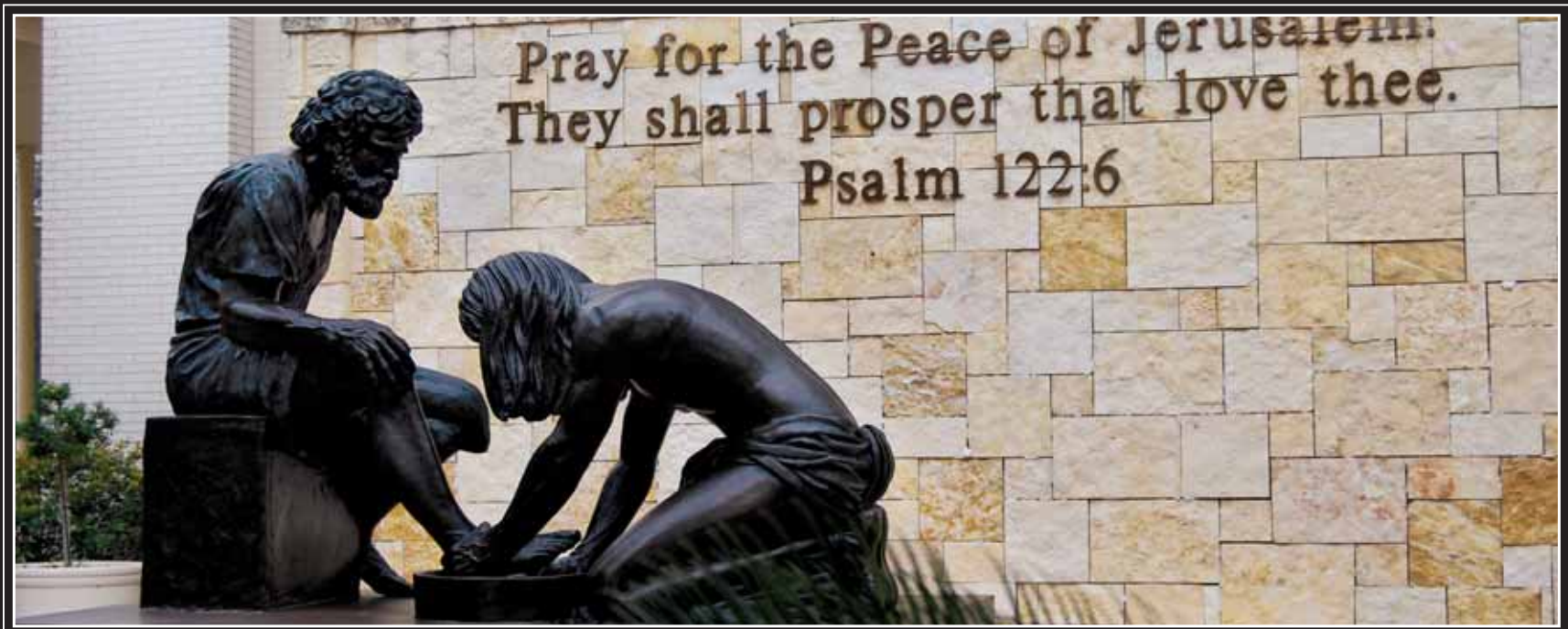
"Torat Emet" Synagogue, Columbus, OH, USA. Stone: Benjamin Gold. Finish: Rough Chiseled.



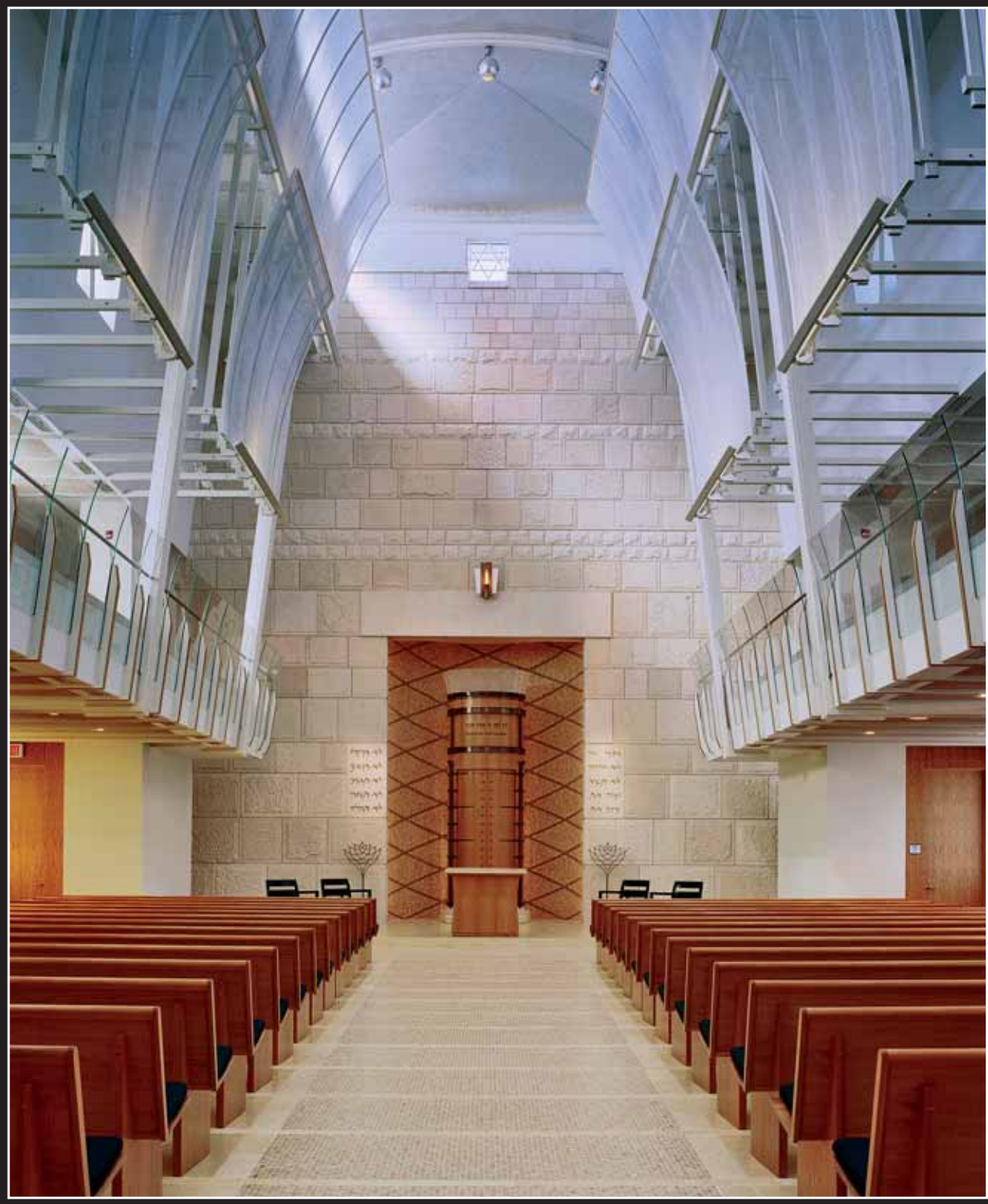
# Religious Institutes



JG Stone, Church of the Transfiguration, Orleans, MA.



Hagee Ministries Church, San-Antonio, Texas, USA. Finish: Natural Face.



Uriah Levy Chapel, US Naval Academy, Annapolis, USA.  
Special mosaic floor, Holy Ark, dome ceiling, floors, stairs, stone signs. Main wall: Western Wall style.



# Retail



Mamilla, Jerusalem. Stone: Benjamin Gold. Finish: Light Chiseled.



Plaza Hotel Mall, NY, USA. Mosaic Stone.



Cotroceni Mall, Bucharest, Romania. Stone: Granit.



Mamilla, Jerusalem. Stone: Benjamin Gold. Finish: Light Chiseled.



# Retail



Cotroceni Mall, Bucharest, Romania.

Supplied 60,000 sq. m natural stone including: Shop drawings & Cutting tickets • Detailed storage plan according to stone location on site • Planning of the anchoring system & implementing specification • QC by JGSW workers in the original country of the stone • On site guidance, immediate solutions and QC • A wide logistics lineup to support all project needs • Daily connection with site manager.  
Floor stone: Delicato, Finish: Honed. Column stone: Travertin, Finish: Honed.

# Residential Buildings



Le Provencal, France. Stone: Travertine.



Soha, NYC. Stone: Hebron Cream. Finish: Bush hammered.



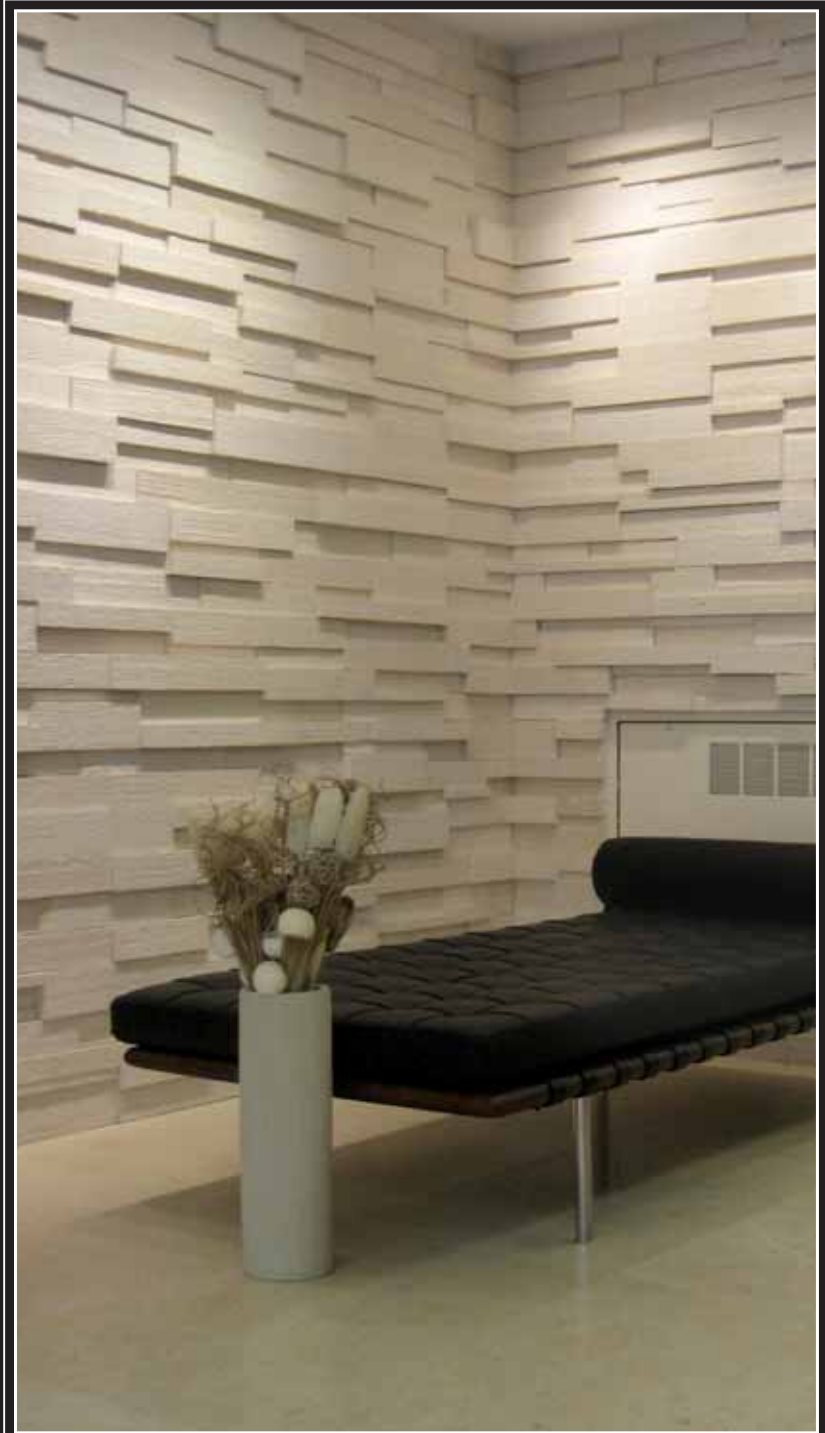
# Residential Buildings



Jaffa Court, Jaffa-Tel-Aviv, Israel Supply & Installation

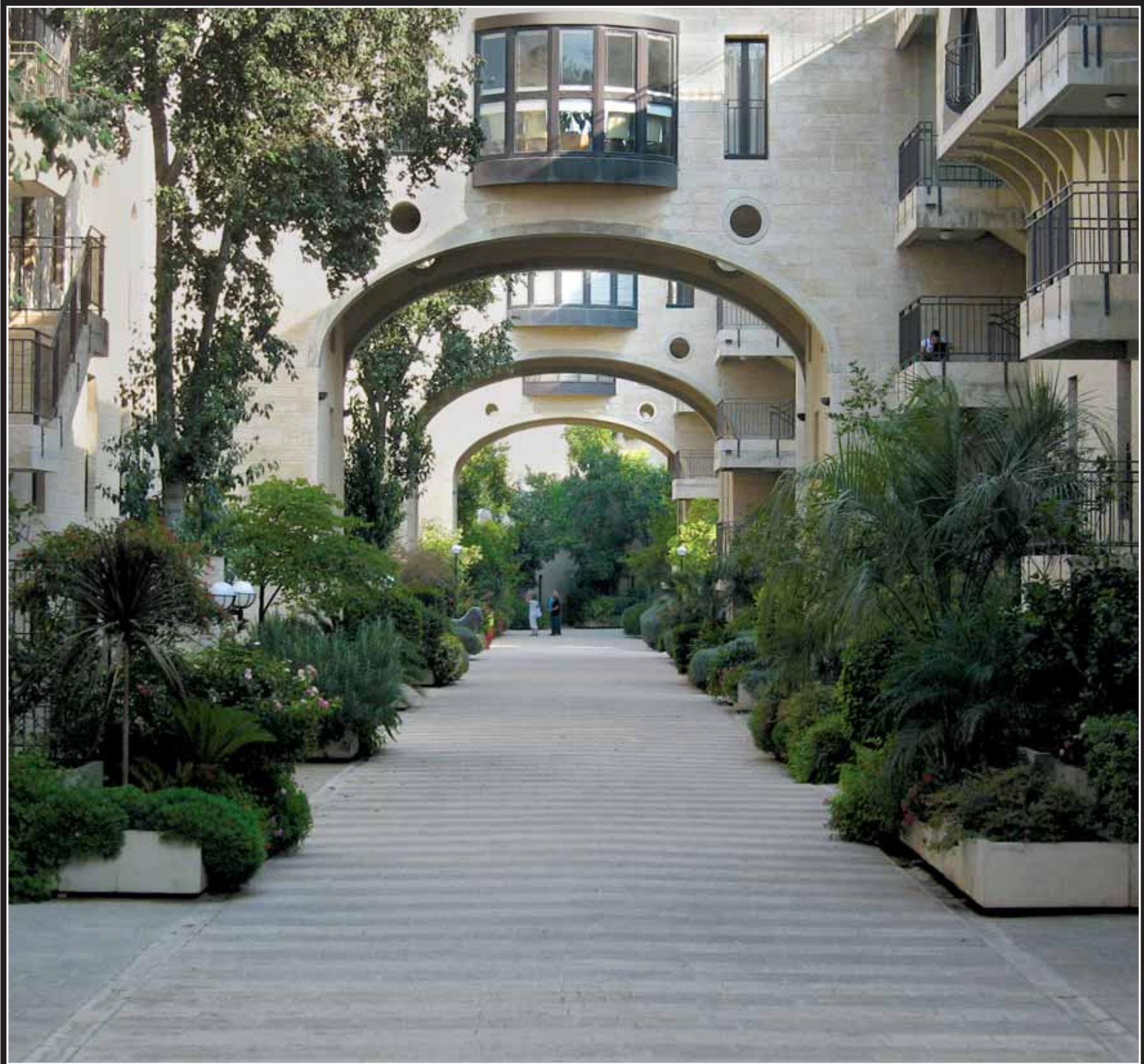


NY, USA. Stone: Hebron White.



Soha, NY, USA. Stone: Pearl. Finish: Grass





"David Village", Jerusalem, Israel. Stone: Benjamin Gold. Finish: Light Chiseled.



# Pools

JGSW offers a comprehensive solution for pools & landscape. The pool program includes a complete line of products using, light color heat resistant stones, special anti slippery textures and solid stone coping with lavish yet natural look. The company offers a variety of mosaics, decors, stairs, fountains and stone waterfalls to complement this line of products.



Radisson Hotel, Bucharest, Romania. Stone: Granit.



Private residence, Israel. Stone: Benjamin Gold.



Private residence, Caribbean island. Stone: Ramon Gold.



Private residence, Ca., USA. Stone: Galil Gold.





Private residence, Israel. Stone: Ramon Grey. Finish: Brushed.



# Landscapes



Salt Lake City Library, UT, USA. Stone: Benjamin Gold.



Cotroceni Mall, Bucharest, Romania. Stone: Granite & Sandy Honed.



David Village, Jerusalem, Israel. Stone: Benjamin Gold.



Biblical Zoo, Jerusalem, Israel. Stone: Natural Face.





Hebrew Union College, Jerusalem, Israel. Stone: Benjamin Gold, Jerusalem Red, Hebron Cream.



# Private Residences



Antique Gold collection.

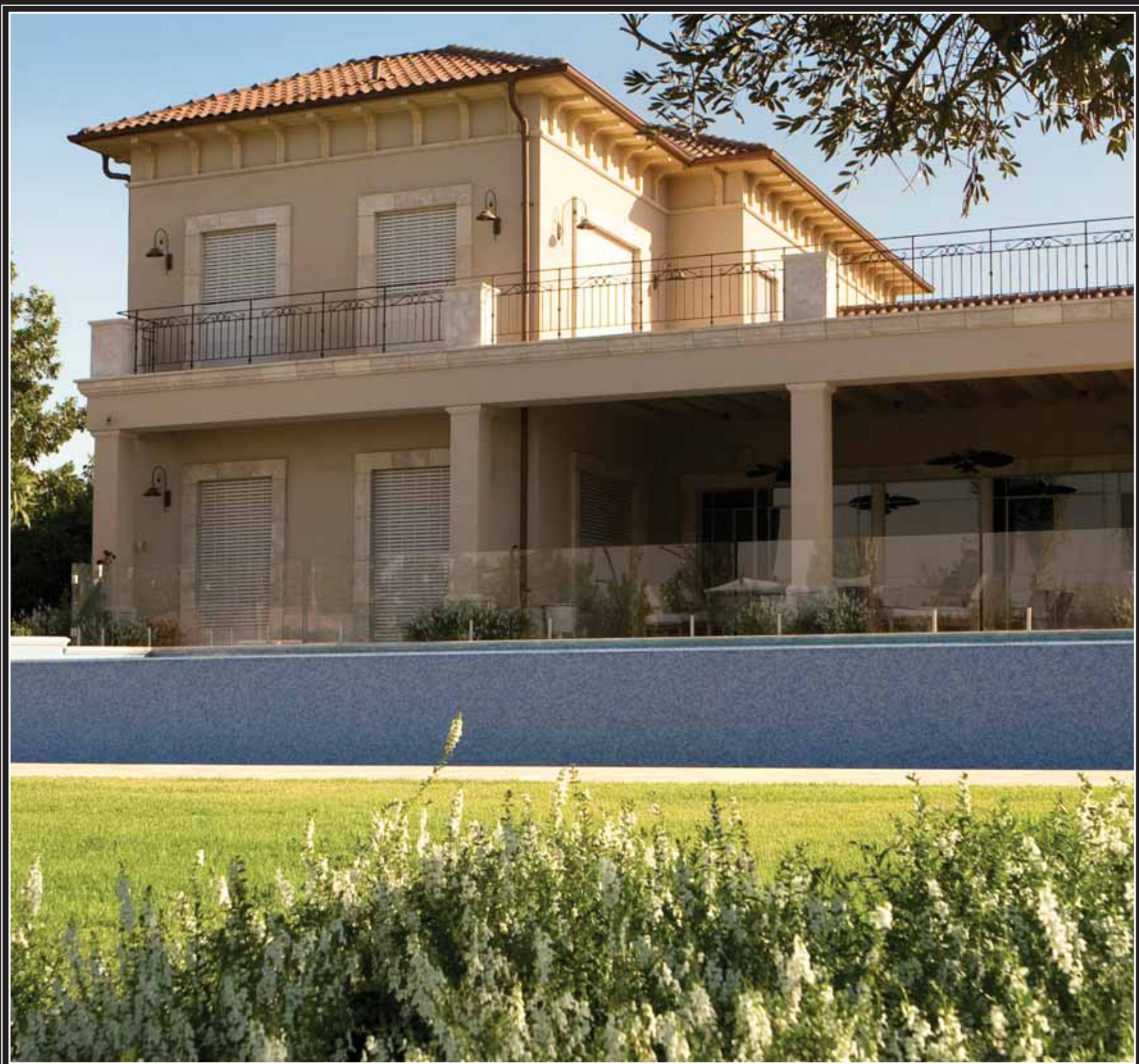


Stone: Galil Gold. Finish: Honed.



Stone: Ramon Gold. Finish: Eden.





Private residence, Israel.



# Private Residences



Israel. Stone: Jerusalem Red. Finish: Light Chiseled.



Israel. Antique Gold collection.



NJ, USA. Stone: Ramon Grey.

# Products

## Stones & Finishes Gallery

JGSW supplies natural stone from quarries in Israel and around the world according clients' needs. The Jerusalem Stone is the company's leading brand and available in different colors and sizes. JGSW assigns quality control teams to all production lines and maintains the highest standards of stone production quality.

Various types of stones from around the world are available upon request.

JGSW has developed a versatile assortment of special flooring from natural stone suitable for all design styles: modern, antique, clean and natural.

These designs can be applied to all types of stone and are available in different sizes.



- Jerusalem Stone
- Limestone
- Marble
- Granite
- Travertine
- Onyx
- Basalt
- Traditional Finishing
- Unique Cladding
- Biblical Collection
- Unique Collection
- Random Floor
- Special Items



Radisson Hotel, Bucharest, Romania. Wall Stone: Onix, Floor Stone: Atex Grey.



# Jerusalem Stone Guide



**HEBRON WHITE**  
White, dolomite limestone with high fossil content, red veining.  
**Sizes:** tiles, cut-to-size, slabs and cubic elements.



**HEBRON GOLD**  
Cream/Gold dolomite limestone with some fossil content.  
**Sizes:** tiles, cut-to-size, slabs and cubic elements.



**KARINA**  
Cream dolomite limestone with some fossil content.  
**Sizes:** tiles, cut-to-size, slabs and cubic elements.



**PEARL**  
Limestone with uniform fossil content in cream colors.  
**Sizes:** tiles, cut-to-size, slabs & cubic elements.

The pictures in this catalogue do not reflect the exact shapes, textures and colors of the natural stones • Nature stones vary in color, finish and character All samples must be approved before the final order • Technical standards testing on all Jerusalem Stone is available upon request



**GALIL GOLD DARK**  
Limestone in shades of dark gold.  
**Sizes:** tiles, cut-to-size, slabs & cubic elements.



**GALIL GOLD LIGHT**  
Limestone in shades of light gold.  
**Sizes:** tiles, cut-to-size, slabs & cubic elements.



**BENJAMIN GOLD**  
Dolomite in shades of dark gold. Particularly beautiful in chiseled finish.  
**Sizes:** tiles, cut-to-size, slabs & cubic elements.



**RAMON GOLD**  
Dolomite limestone with uniform fossil content in yellow colors.  
**Sizes:** tiles, cut-to-size, slabs & cubic elements.



# Jerusalem Stone Guide



## RAMON GREY

Dolomite limestone with relatively uniform fossil content. Grey /white providing the effect of grey — slight hint of reddish veins occasionally.  
**Sizes:** tiles, cut-to-size, slabs & cubic elements.



## RAMON GREY-GOLD

Dolomite limestone with relatively uniform fossil content in grey & gold colors.  
**Sizes:** tiles, cut-to-size, slabs & cubic elements.



## BASALT STONE

A volcanic stone that is black in color and extremely hard.  
**Sizes:** not available in large blocks, mostly used as 12 x 24" tiles or 12"x free length.



## BENJAMIN GREY

Dolomite in shades of dark grey.  
**Sizes:** tiles, cut-to-size, slabs and cubic elements.

The pictures in this catalogue do not reflect the exact shapes, textures and colors of the natural stones • Nature stones vary in color, finish and character All samples must be approved before the final order • Technical standards testing on all Jerusalem Stone is available upon request



**JERUSALEM RED**  
Dolomite with oxidized iron shades of red and gold, providing red appearance.  
**Sizes:** up to 12" (30 cm) wide by free length and cubic elements.



**CANAAN GOLD**  
Gold slate stone. Surface is naturally uneven.  
**Sizes:** from 8–16" (20–40 cm) by free length, random size, flagstone.  
Not available in slabs or chiseled finishes. 3/4" – 2 3/8" (2–6 cm) thick



**CANAAN PINK**  
Pink slate stone. Surface is naturally uneven.  
**Sizes:** from 8–16" (20–40 cm) by free length, random size, flagstone.  
Not available in slabs or chiseled finishes. 3/4" – 2 3/8" (2–6 cm) thick.



**SHOMRON**  
Red & gold slate stone. Stone surface is naturally uneven.  
**Sizes:** from 8–16" (20–40 cm) by free length, random size, flagstone.  
Not available in slabs or chiseled finishes. 3/4" – 2 3/8" (2–6 cm) thick.



# Travertine

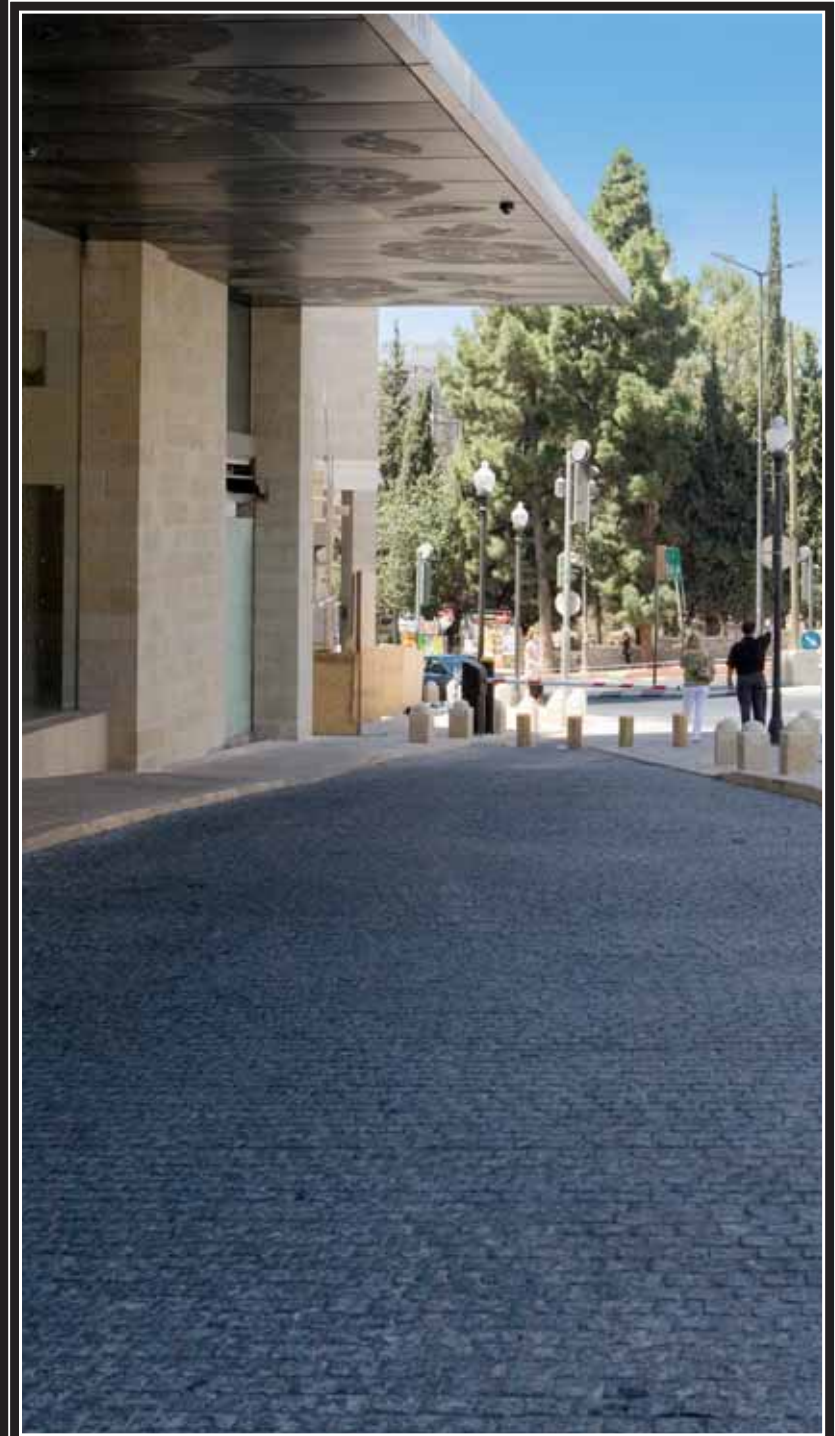
A range of over 600 types of stone from around the world.



La Provencal, France.

# Basalt

A range of over 600 types of stone from around the world.

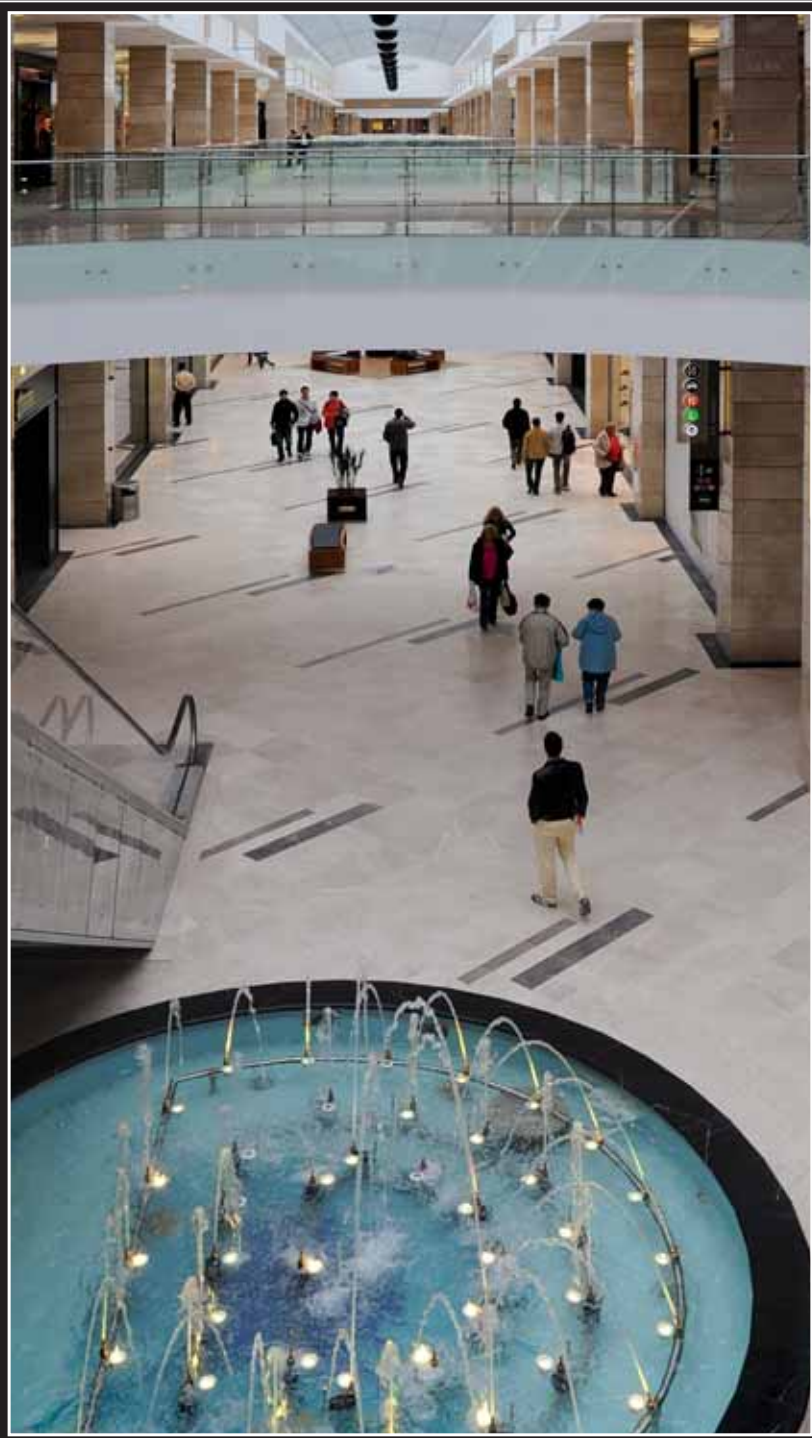


Mamilla Hotel, Jerusalem, Israel.



# Limestone

A range of over 600 types of stone from around the world.



Cotroceni Mall, Bucharest, Romania. Stone: Delicato, Finish: Honed.

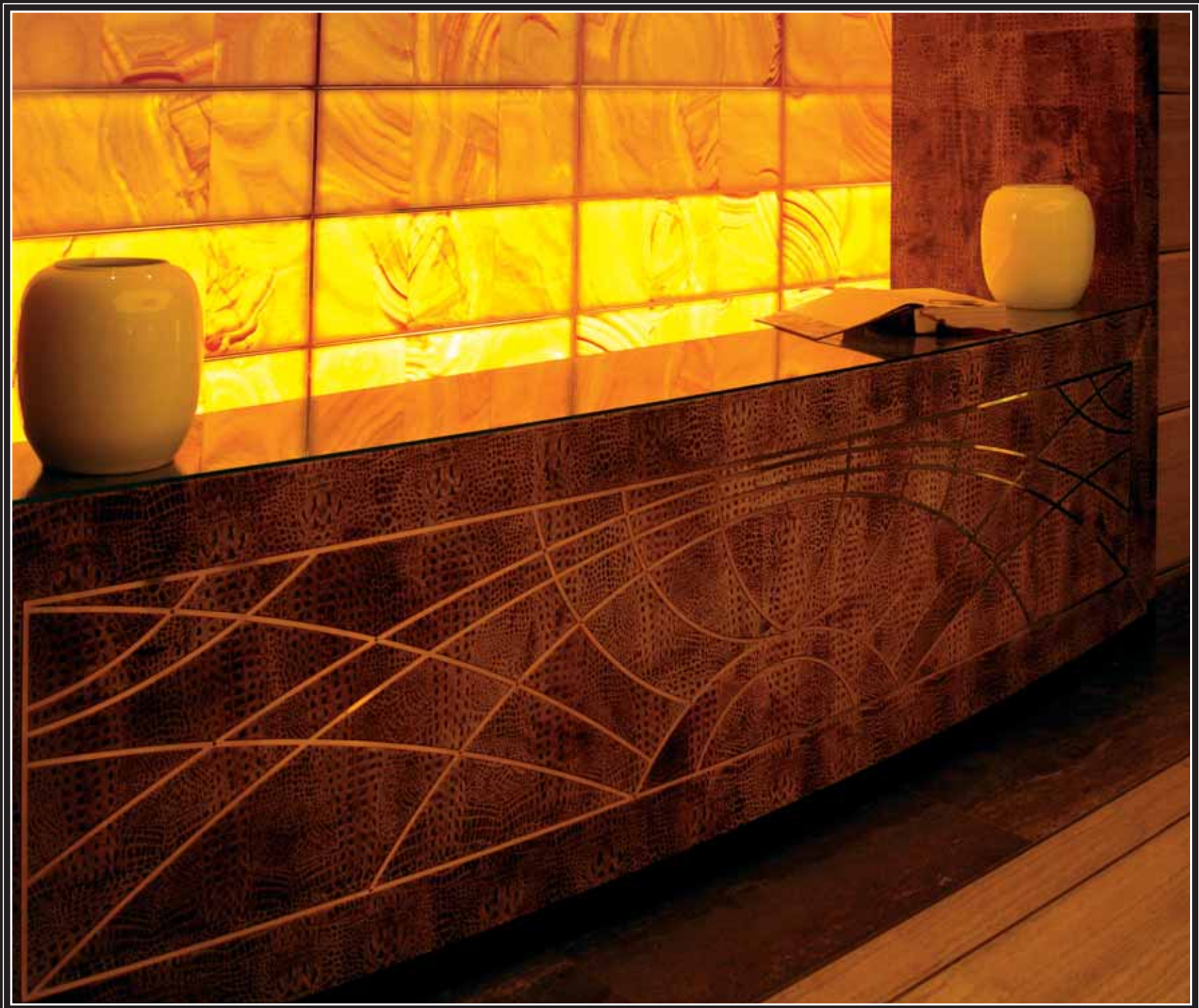


Atex Grey, Radisson Hotel, Bucharest, Romania.



Onyx

A range of over 600 types of stone from around the world.



La Provencal, France.



# Granite

A range of over 600 types of stone from around the world.



Light Train, Jerusalem, Israel.

# Marble

A range of over 600 types of stone from around the world.



Plaza Hotel, NY, USA.



# Honed & Polished

## Tiles

### Stones:

Ramon Gold, Ramon Grey, Hebron White, Hebron Gold, Galil Gold, Benjamin Grey.

### Finishes:

Polished and Honed/Matte.

### Calibrated tiles:

|                |                      |
|----------------|----------------------|
| 12 x 12 x 3/8" | 30.5 x 30.5 x 1.2 cm |
| 16 x 16 x 5/8" | 40.6 x 40.6 x 1.2 cm |
| 18 x 18 x 5/8" | 45.7 x 45.7 x 1.6 cm |
| 24 x 24 x 5/8" | 61.0 x 61.6 x 1.0 cm |

### Tolerance on cut-to-size:

Meets industry standards



HEBRON WHITE



HEBRON GOLD



PEARL



BENJAMIN GREY



RAMON GREY



KARINA

## Slabs

### Stones:

Ramon Gold, Ramon Grey, Hebron White, Hebron Gold, Galil Gold, Benjamin Grey, Benjamin Gold.

### Finishes:

Polished, honed/matte, saw-cut, bush-hammered, sand-blasted.

### Sizes:

Approximately  
6.5 x 8.2 ft. — 180 x 250 cm  
Available in thicknesses from  
3/4" to 2" — 2 to 4.6 cm

### Uses:

Slabs, cut-to-size, counter tops.

The above finish is available in additional types of stone.



Private residence, Israel. Stone: Ramon Grey.



# Mutabe — Bush Hammered

A subtle finish composed of small textured dots. The density of the dots and thus their texture can vary as per the client's request. Our stone workers will use a soft bush-hammered or a hard bush-hammered technique, as required. Depending on the texture requested, the Mutabe finish can be either hand-made or machined.

**Sizes:** 12 x 24 x 3/4"      30 x 60 x 2 cm,  
12 x free length x 3/4"      30 x free length x 2 cm  
Also available in cut-to-size and slabs in various thickness.  
Recommended thicknesses: from 3/4"– 2", 2 cm to 4.6 cm,  
depending on size.

**Stones available:**

Ramon Gold, Ramon Grey, Hebron White, Hebron Gold, Galil Gold,  
Benjamin Gold, Benjamin Grey, Jerusalem Red.

The above finish is available in additional types of stone.

\*In our Antique collection, the tumbled Mutabe finish is known as "Jericho".



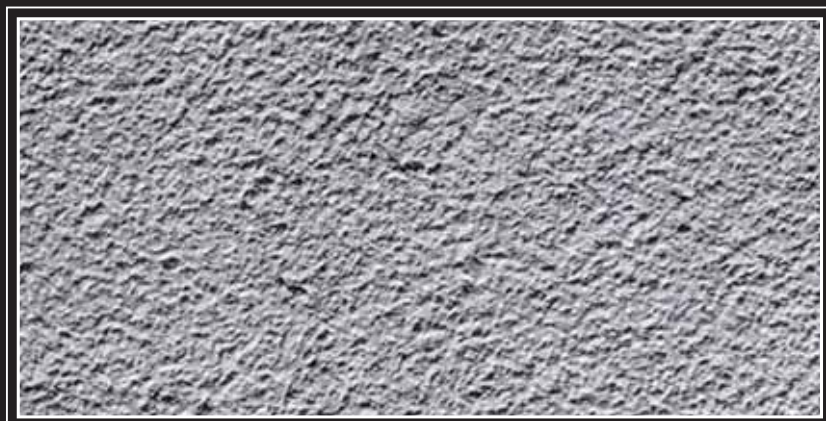
HEBRON WHITE



BENJAMIN GOLD



RAMON GOLD



BENJAMIN GREY



RAMON GREY





Business Park, Herzliah, Israel. Stone: Ramon Grey.



# Musamsam — Light Chiseled

A light hand-chiseled finish with a fine texture that looks like sprinkled sesame seeds.

**Sizes:**

12 x 24 x 3/4"      30 x 60 x 2 cm

12 x free length x 3/4"      30 x free length x 2 cm

Also available in cut-to-size and slabs in various thickness.

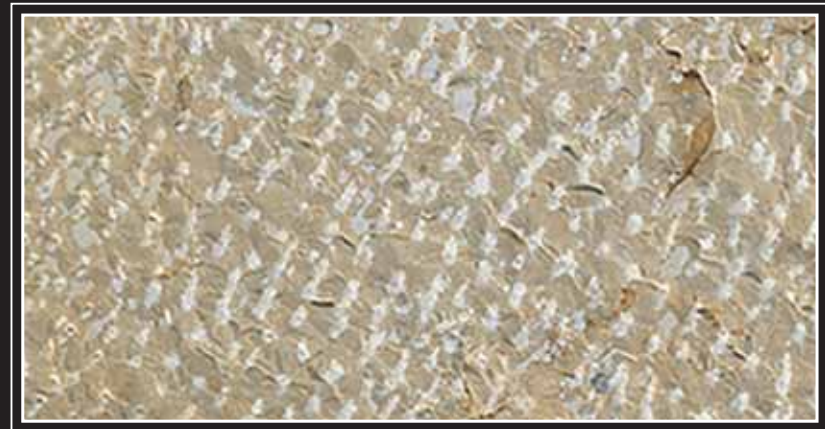
Recommended thicknesses: from 3/4" to 2" 2cm to 4.6 cm, depending on size.

**Stones available:**

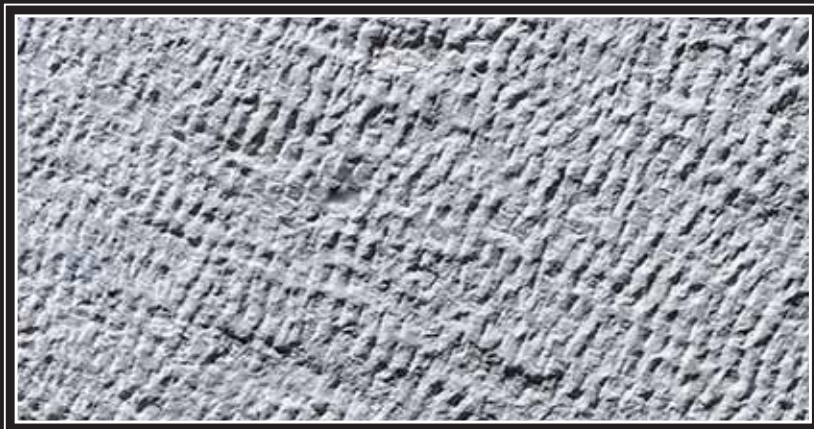
Ramon Gold, Ramon Grey, Hebron White, Hebron Gold, Galil Gold, Benjamin Gold, Benjamin Grey, Jerusalem Red.

The above finish is available in additional types of stone.

\*In our Antique collection, the tumbled Musamsam finish is known as "Negev".



BENJAMIN GOLD



BENJAMIN GREY



BENJAMIN GOLD



RAMON GREY



JERUSALEM RED





Hebrew Union College, Jerusalem, Israel. Stone: Benjamin Gold.



# Taltish— Rough Chiseled

A rough-chiseled hand-made finish with deep textured lines.

**Sizes:** 12 x 24 x 3/4"      30 x 60 x 2 cm  
12 x free length x 3/4"      30 x free length x 2 cm

Also available in cut-to-size.

Recommended thicknesses: from 3/4" to 2", 2 cm to 4.6 cm, depending on size.

**Stones available:** Ramon Gold, Ramon Grey, Hebron White, Hebron Gold, Galil Gold, Benjamin Gold, Benjamin Grey, Jerusalem Red.

The above finish is available in additional types of stone.



RAMON GOLD



RAMON GREY



BENJAMIN GOLD



BENJAMIN GREY





"Torat Emet", OH., USA. Stone: Benjamin Gold.



# Tubze Split Face

Finish of stone is chiseled to a convex shape.  
Can also be supplied with a straight face known  
as split-face.

## Sizes:

6 x 12 x 3/4 + 3/4"      15 x 30 x 2+2 cm  
12 x 24 x 11/4 + 11/4"      30 x 60 x 3+3 cm

Recommended thickness base + "stomach":  
from 1 1/2 to 3" (4 to 8 cm).

Also available in cut-to-size.

## Stones available:

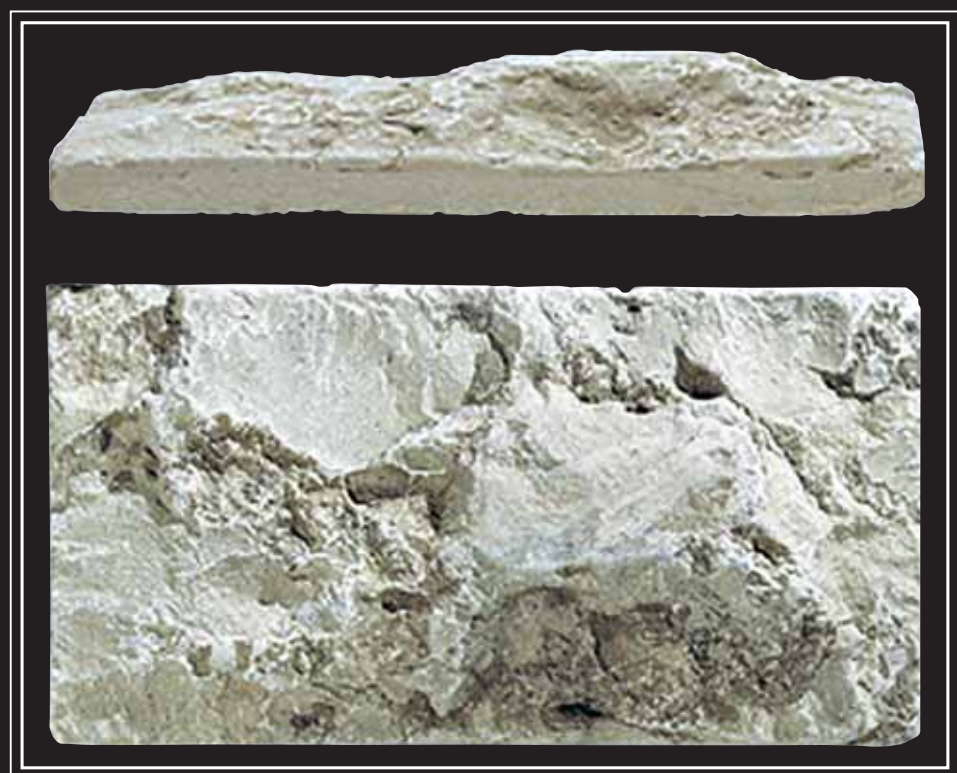
Ramon Gold, Ramon Grey, Hebron White, Hebron Gold,  
Galil Gold, Benjamin Gold, Benjamin Grey, Jerusalem Red.

The above finish is available in additional types of stone.

\*In our Antique collection, the tumbled Tubze finish is known  
as "Razuk".



RAMON GOLD



RAMON GREY





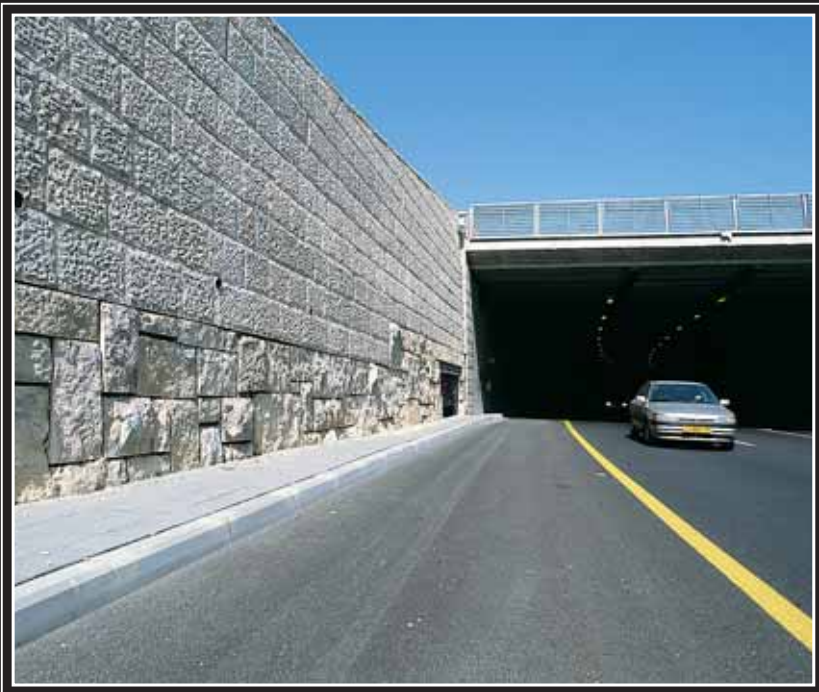
Private residence, Israel. Stone: Jerusalem Red.



# Unique Cladding



Western Wall style, USA.



Natural Face, Jerusalem.

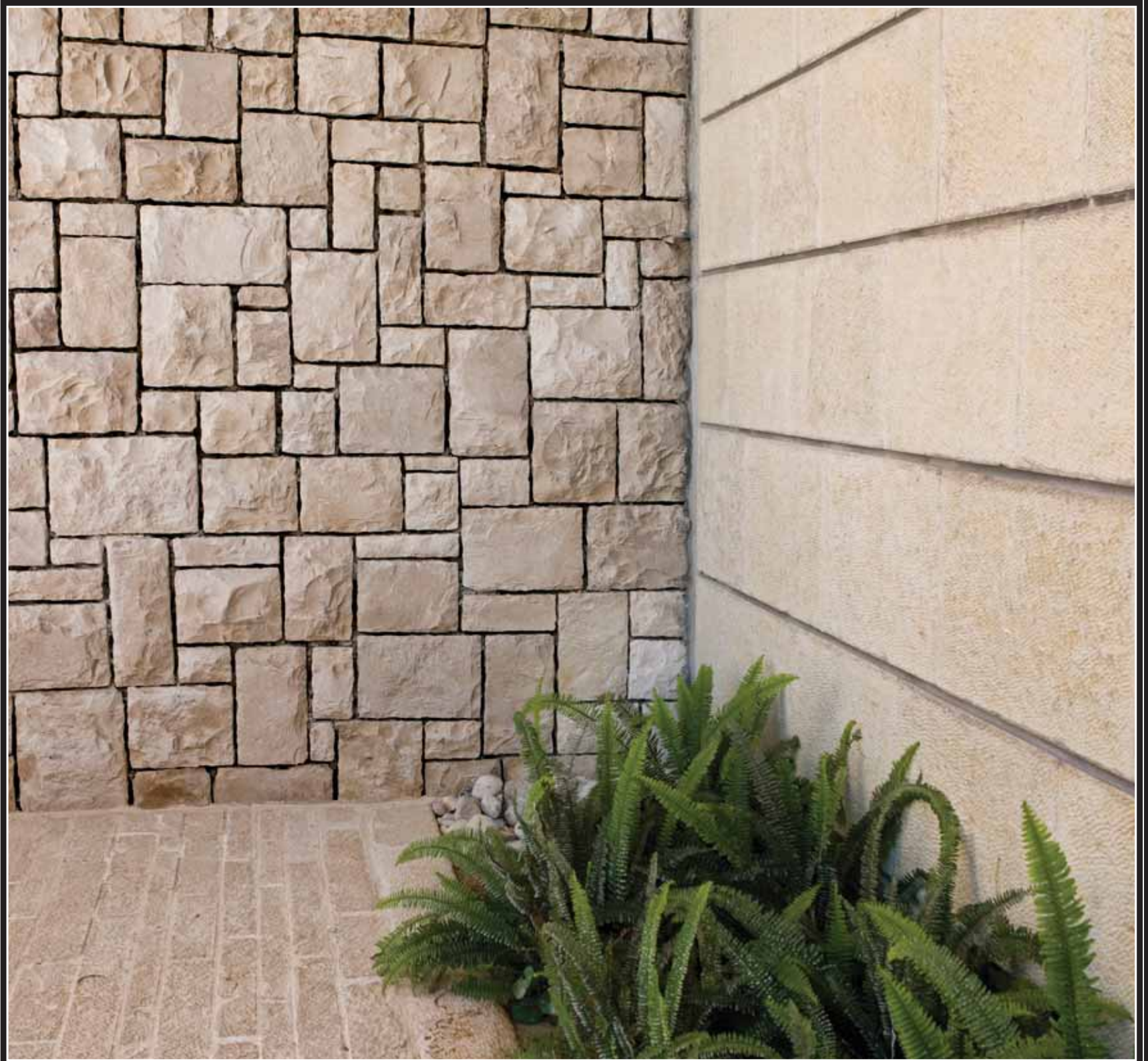


Tumbled natural stone, country style, USA.



Grass Finish, NY, USA.





Natural face, special design and installation, American Consulate, Jerusalem, Israel.



# Biblical Collection



Canaan Pink, Israel.



Antique Gold collection, Israel.



Cannan Gold, Tavor, USA.



Reclaimed stone, Jerusalem.



Cannan Gold, Tavor – USA



# Unique Collection



Brushed, Ramon Grey.



Desert, Benjamin Grey.



Sand blasted, Galil Gold.



Arad, Ramon Grey.



Stone: Galil Gold. Finish: Sand blasted.



# Unique Collection



Stone: Ramon Gold. Finish: Kedem.



Stone: Hebron White. Finish: Eden.



Stone: Ramon Grey. Finish: Moav (Tumbled).



Stone: Galil Gold. Finish: Midbar.



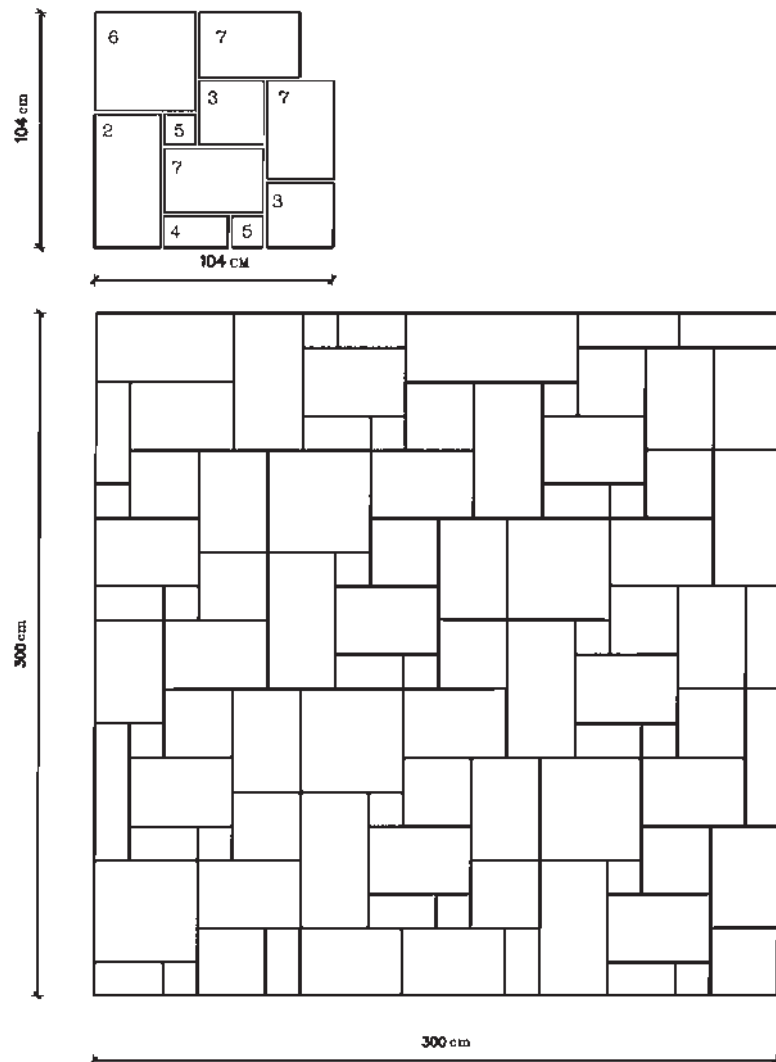
Midbar, Galil Gold.



# Random Floor

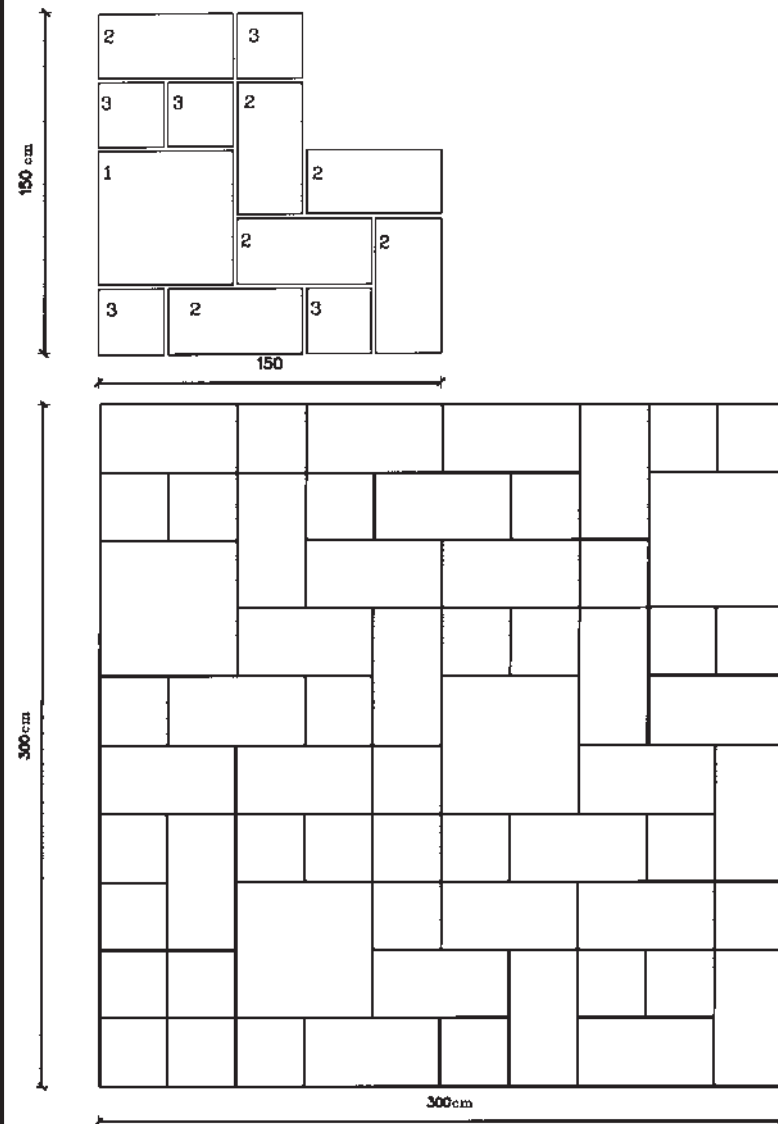
## Module B

|         |          |            |          |
|---------|----------|------------|----------|
| Stone 2 | 12 x 24" | 30 x 60 cm | 1 piece  |
| Stone 3 | 12 x 12" | 30 x 30 cm | 2 pieces |
| Stone 4 | 6 x 12"  | 15 x 30 cm | 1 piece  |
| Stone 5 | 6 x 6"   | 15 x 15 cm | 2 pieces |
| Stone 6 | 18 x 18" | 45 x 45 cm | 1 piece  |
| Stone 7 | 12 x 18" | 30 x 45 cm | 3 pieces |



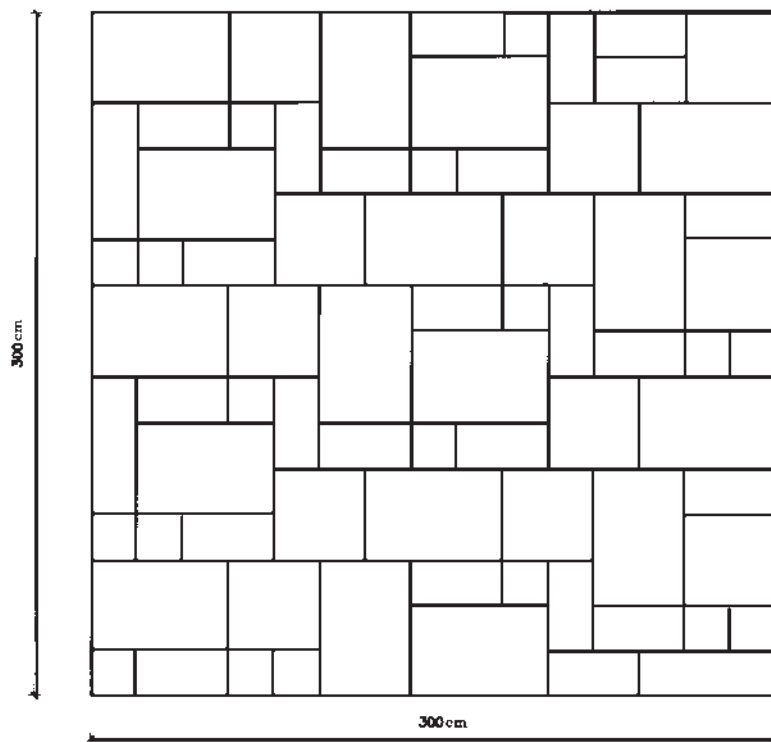
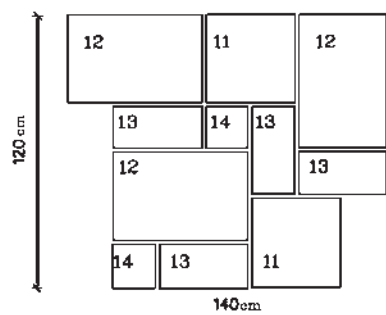
## Module C

|         |          |            |          |
|---------|----------|------------|----------|
| Stone 1 | 24 x 4"  | 60 x 60 cm | 1 piece  |
| Stone 2 | 12 x 24" | 30 x 60 cm | 6 pieces |
| Stone 3 | 12 x 12" | 30 x 30 cm | 5 pieces |



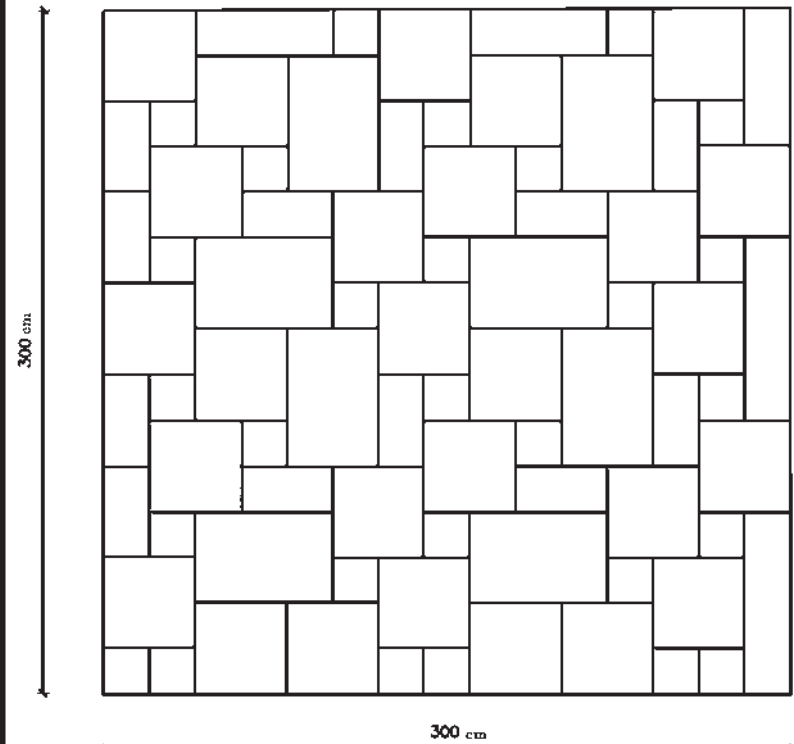
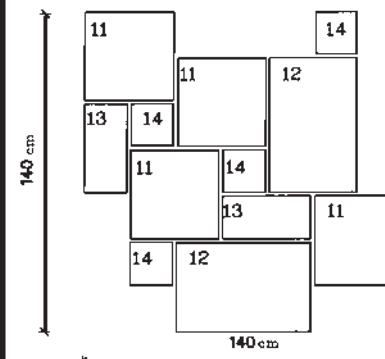
## Module D

|          |          |            |   |        |
|----------|----------|------------|---|--------|
| Stone 14 | 8 x 8"   | 20 x 20 cm | 2 | pieces |
| Stone 13 | 8 x 16"  | 20 x 40 cm | 4 | pieces |
| Stone 11 | 16 x 16" | 40 x 40 cm | 2 | pieces |
| Stone 12 | 16 x 24" | 40 x 60 cm | 3 | pieces |



## Module F

|          |          |            |   |        |
|----------|----------|------------|---|--------|
| Stone 12 | 16 x 24" | 40 x 60 cm | 2 | pieces |
| Stone 13 | 8 x 16"  | 20 x 40 cm | 2 | pieces |
| Stone 14 | 8 x 8"   | 20 x 20 cm | 4 | pieces |
| Stone 11 | 16 x 16" | 40 x 40 cm | 4 | pieces |



- Stones will be cut 0.5 cm (0.2") shorter than width and length specified, for joints, unless otherwise specified.
- Stones of all modular shapes can be scaled up or down.



# Special Items

The three-dimensional nature of stone makes it a versatile material for enriching general designs by using specialty details: arches, corners, cornices, decorative options for doors, windows, landscaping and more.



White mosaic, special design, Plaza Hotel, NY, USA.



Broken mosaic floor, Washington, USA.

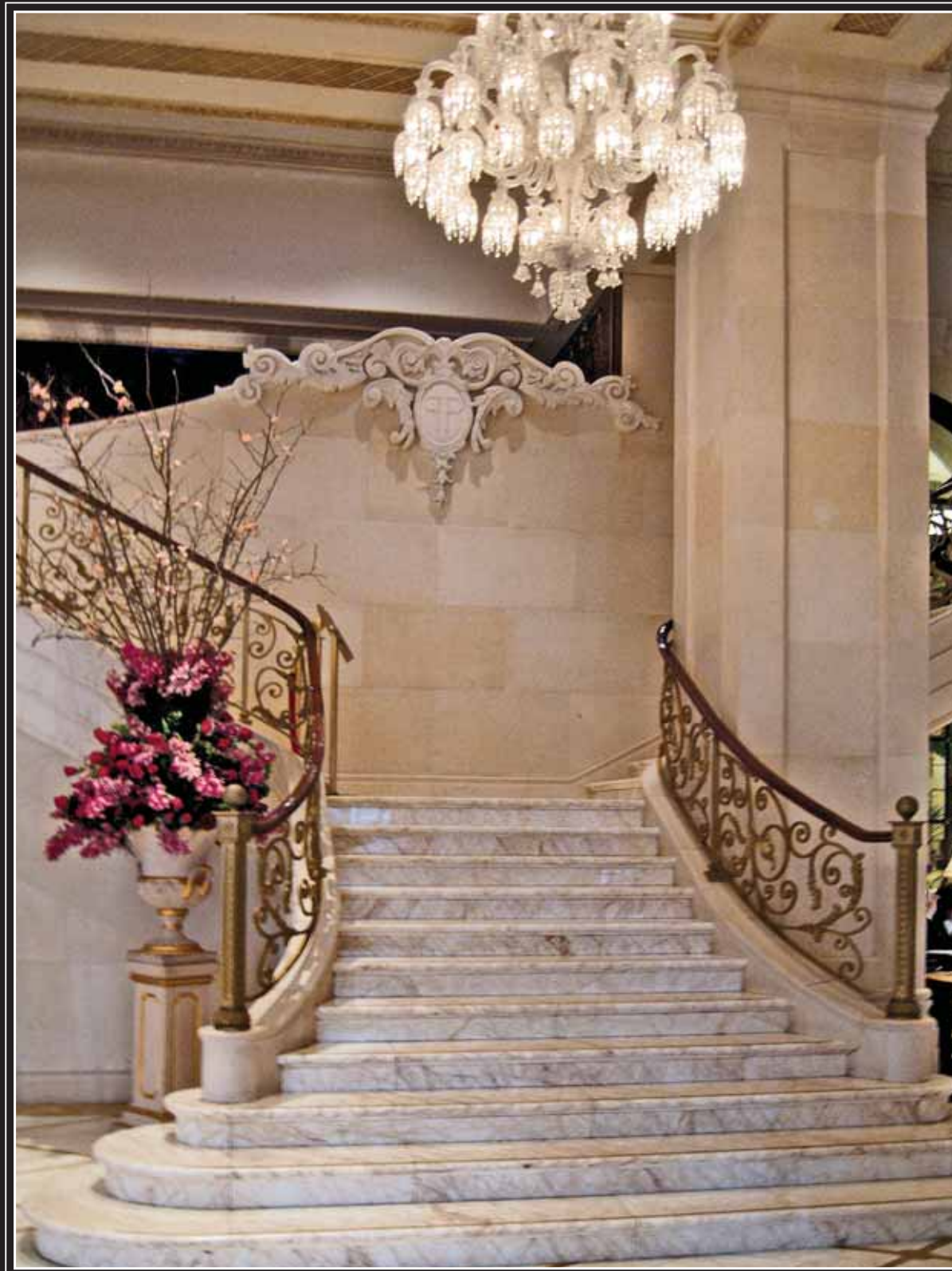


Ramon Gold, mosaic stairs, Landon.



Broken Mosaic, dome ceiling , Washington, USA.





Special design, stairs, column, artistic wall. Plaza Hotel, NY, USA.



# Special Items

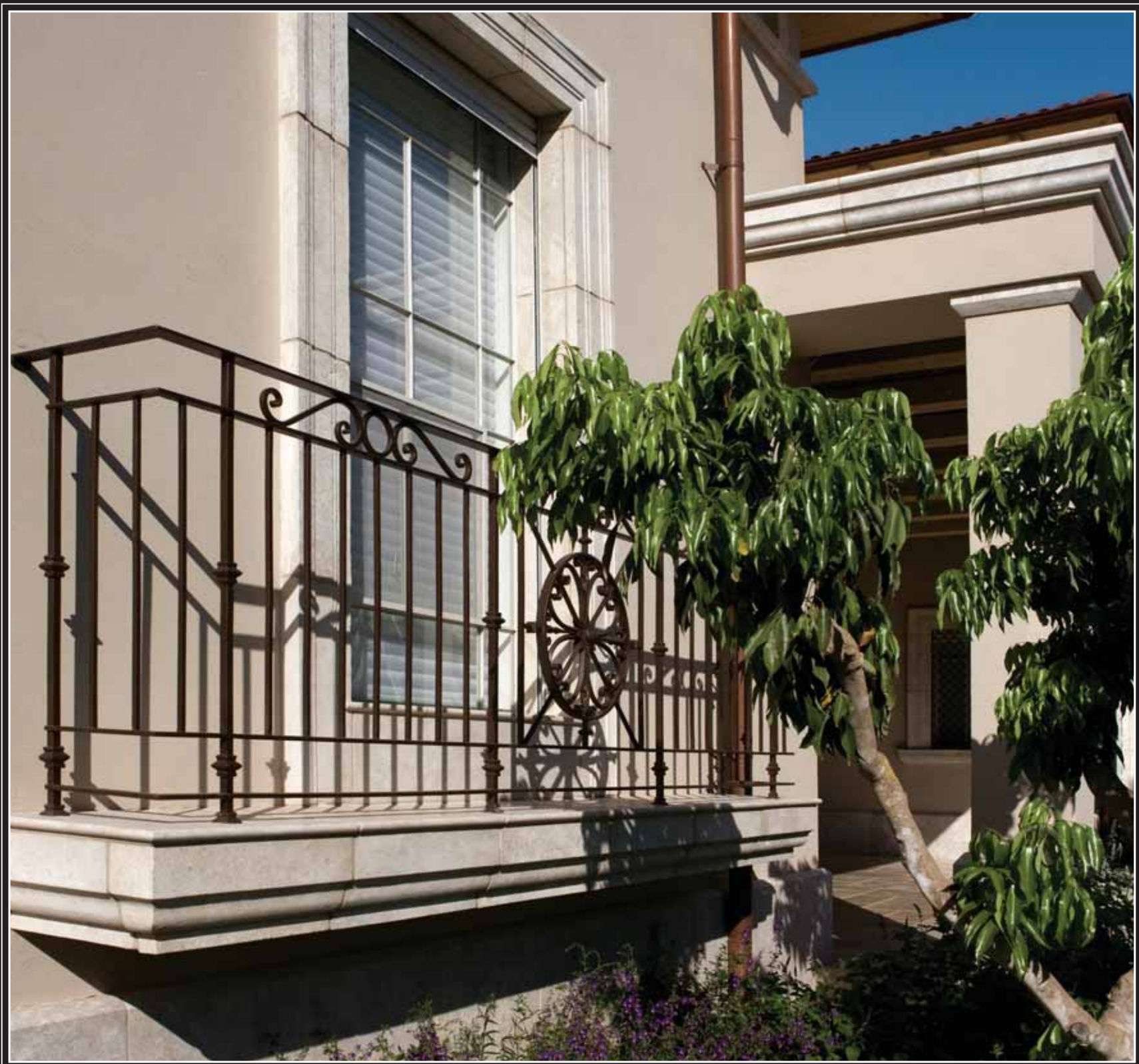
Jerusalem Gardens offer you a wide selection of additional products and services to enrich your designs. Decorative & ornamental items: mosaics • stairs • sinks • rails & balustrades • moldings • building details • specialty items



Column in Pearl stone, Plaza Hotel, NY.



Special moldings, Ramon Grey, Israel.



JGSW moldings design, Ramon Grey, Israel.



# Special Items



Ramon Gold balustrades, Milwaukee Public Library, USA.



Sink unit & designed mosaic. Plaza Hotel, NYC.

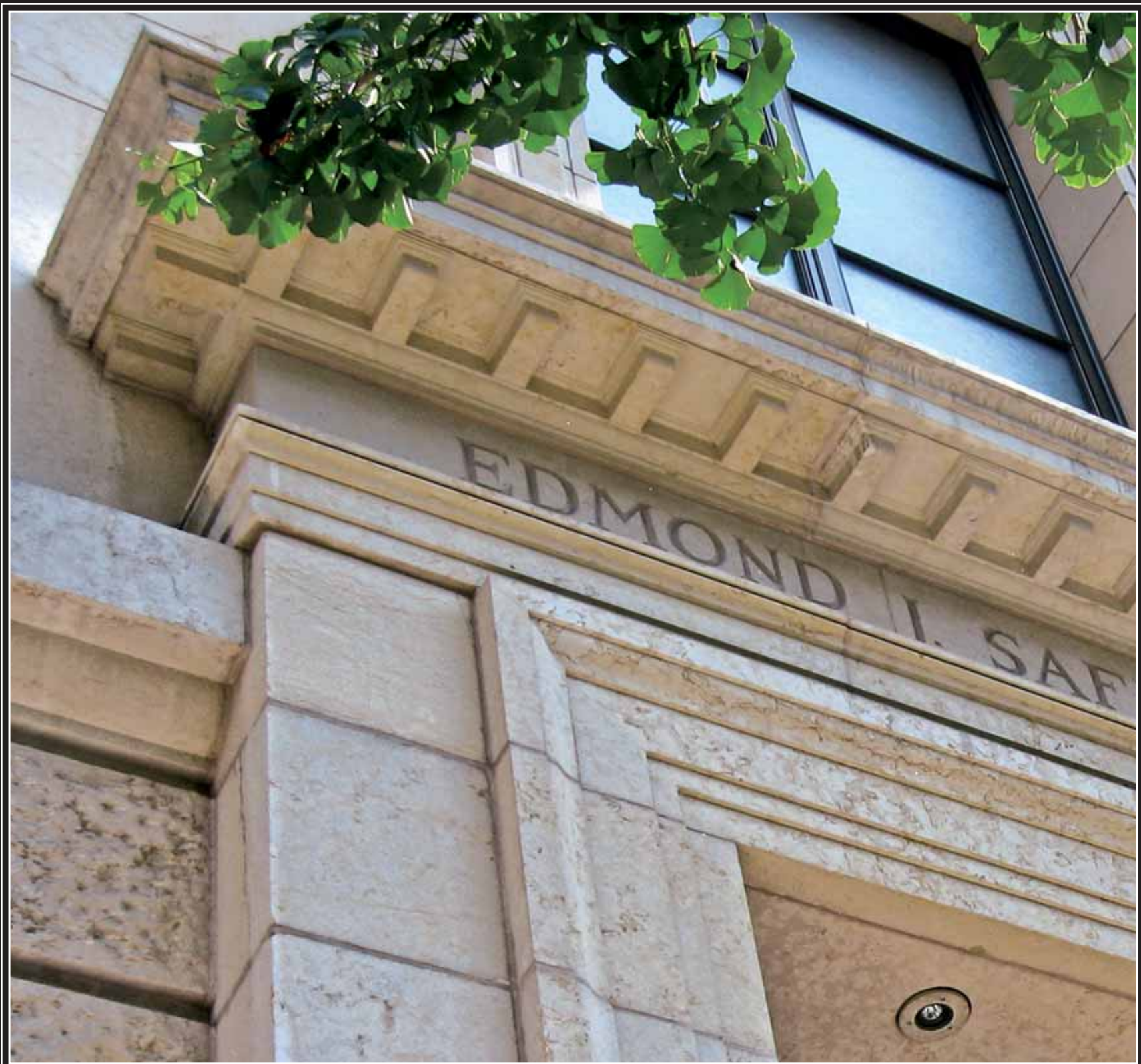


Special size sink for Mamilla Hotel, Jerusalem.



Light column, Calatrava design, Jerusalem.





Large molding, Safra Synagogue, NY, USA.



# Project List

**Hospitality** USA: Plaza Hotel New York City, NY \* Pool and Spas Center CA \* Intercontinental Hotel Chicago, IL \* Four Seasons Resort Jackson Hole WY \* Radisson Hotel – Bucharest Bucharest, ROMANIA \* Plaza Hotel Antwerp, BELGIUM \* Caravelle Hotel VIETNAM \* Park Hyatt Hotel Saigon, VIETNAM \* ISRAEL: Dan Eilat Hotel Eilat \* Herods Palace Hotel Eilat \* The David Citadel Hotel Jerusalem \* Hyatt Hotel Jerusalem \* Princess Hotel Eilat \* Isrotel Agamim Eilat \* Dan Accadia Hotel Herzliya \* Mishknot Shananim Jerusalem \* Mamilla-Alrov Quarter Hotel Jerusalem

**Government** Virginia State Capitol VA, USA \* ISRAEL: The Israeli Knesset – Extension Jerusalem \* American Consulate Jerusalem \* City Hall Jerusalem Jerusalem \* Hadassah Hospital Jerusalem

**Education & Research** USA: American Committee for the Weizmann Institute of Science New York City, NY \* Metropolitan Egyptian Gallery New York City, NY \* NYU – 190 E 7<sup>th</sup> New York City, NY \* Simon Weisenthal Center & Museum Los Angeles, CA \* Carmichael Library Carmichael, CA \* Ramsey Cultural Center – Native American San Francisco, CA \* University of Baltimore Baltimore, MD \* Salt Lake City Library Salt Lake City, UT \* Milwaukee Public Library WI \* Solomon Schechter School St. Louis, MO \* Complexe Scolaire et Socio Culterel Paris, FRANCE \* South Africa Jewish Museum Cape Town, SOUTH AFRICA \* ISRAEL: University of Tel Aviv Tel Aviv \* Yad V'Shem Jerusalem \* The Science Park – Be'er Sheva Be'er Sheva \* Hebrew Union College Jerusalem \* Opera Building in Golda Center Tel Aviv \* Ort School Menahet Jerusalem \* Yad Labanim Migdal Haemek \* Auditorium Orchestra Building Jaffa \* Archeology Dept Beit-Shean \* Beit Shimshon Jerusalem \* Cultural Center Ashkelon

**Transit & Infrastructure** ISRAEL: Light Rail Jerusalem \* Ben Gurion Airport Tel Aviv \* Highway 6–Toll road \* Bridge of Strings (Calatrava) Jerusalem \* Supreme Court Bridge Jerusalem \* Begin Road – Jerusalem Jerusalem \* Jaffa Gate Bridge Jerusalem \* Sonol Fuel Station Beit-Kama

**Renovation** ISRAEL: Old Turkish Hotel Be'er Sheva \* Mamilla-Alrov Quarter Jerusalem \* City Hall Jerusalem Jerusalem

**Office Buildings** USA: International Economics Institute Washington, DC \* Southbury Jewish Center Southbury, CT \* HYUNDAI Corporation Building Jongno-Gu, Seoul KOREA \* Dong Bu Building Seoul, KOREA \* 30 Hill Street SINGAPORE \* ISRAEL: Mount Hotzvim – Central House Jerusalem \* Conference Center Shfaim \* Business Park Hertzlia Herzliya \* El-Ad Jerusalem \* Festivities’ Hall Hadar Dimol Ramat Gan

**Religious Institutes** USA: Edmund Safra Synagogue New York City, NY \* Chabad House – Upper East Side New York City, NY \* Levy Chapel – US Naval Academy Annapolis, MD \* JCC – Old Westbury, 11568 NY \* JCC – Staten Island NY \* Yeshiva Boys School – Simon Wiesenthal Center & Museum Los Angeles, CA \* Cathedral of our Lady Los Angeles, CA \* New Square Temple NJ \* Torat Emet Synagogue Columbus, OH \* Church of the Transfiguration Orleans, MA \* Temple Emanuel Greensboro, NC

**Retail** USA: Plaza Hotel Mall New York City, NY \* Hickey Freeman – 5<sup>th</sup> Ave. New York City, NY \* 5<sup>th</sup> Avenue Stores & Restaurants Naples, FL \* Liberec Mall Liberec, CZECH REPUBLIC \* Cotroceni Park Mall Bucharest, ROMANIA \* ISRAEL: Mamilla-Alrov Quarter Mall Jerusalem \* Business Park Hertzlia Herzliya \* The Marina Project Herzliya \* Kfar Saba Mall Kfar Saba \* Or Yehuda Mall Or Yehuda \* Polgat Net National Chain \* Malha Mall Jerusalem \* Factory 54 Tel Aviv \* Golf – Kitan National Chain

**Residential Buildings** USA: Arlington Suites Arlington, NY \* SOHA New York City, NY \* 555 West New York City, NY \* Le Patio Cap De Antibes, FRANCE \* Residential building under construction Mapo-Ku, Seoul, KOREA \* Villa Jerome ANGOLA \* Ferdinan Bucharest, ROMANIA \* ISRAEL: Mamilla-Alrov Quarter Residential Jerusalem \* “Kfar David” – Mamila Jerusalem \* Presidential Gardens Jerusalem \* Jaffa Court Jaffa \* Sheinman Street Bavly Tel Aviv \* Pninat Hasharon Hod Hasharon \* Pninat Tzfat Tzfat

**Landscape** USA: Bayonne Golf Club NJ \* Salt Lake City Library Salt Lake City, UT \* Golf Club Cap De Antibes, FRANCE \* ISRAEL: Biblical Zoo Jerusalem \* Adjami Neighborhood Jaffa \* Technologic Garden Jerusalem \* Kfar David, Mamilla Jerusalem \* City Hall Jerusalem Jerusalem \* Yad V’Shem Jerusalem \* Bell Garden Jerusalem \* Hebrew Union College Jerusalem



# Index

|                                 |        |    |   |                |
|---------------------------------|--------|----|---|----------------|
| Antique Gold Collection         | Finish | 44 | 46  | 72             |
| Arad                            | Finish | 74 |   |                |
| Atex Grey                       | Stone  | 20 | 56  |                |
| Basalt                          | Stone  | 52 | 55  |                |
| Beer-Zaeit Grey = Benjamin Grey | Stone  | 52 | 60  | 62 64 66 74 75 |
| Beer-Zeit Gold = Benjamin Gold  | Stone  | 3  | 12 13 23 24 25 30 31 34 35 38 39 40 42 43 51 62 64 65 66 67 |                |
| Brushed                         | Finish | 41 | 74  |                |
| Bush Hammered/Mutabe            | Finish | 3  | 30 37 62 63   |                |
| Canaan Gold                     | Stone  | 21 | 53 72 73  |                |
| Canaan Pink                     | Stone  | 29 | 53 72   |                |
| Column                          | Item   | 19 | 23 55 84  |                |
| Cornices                        | Item   | 82 | 83 85   |                |
| Country Style                   | Finish | 70 |   |                |
| Crema Marfil                    | Stone  | 34 |   |                |
| Delicato                        | Stone  | 5  | 34 36   |                |
| Desert                          | Finish | 74 |   |                |
| Eden (Pillow Edges)             | Finish | 44 | 76  |                |
| Galil Gold                      | Stone  | 26 | 29 40 44 51 74 75 76 77                                     |                |
| Granite                         | Stone  | 27 | 40 42 58  |                |
| Grass                           | Finish | 38 | 70  |                |
| Green Building                  |        | 14 | 15  |                |
| Halila                          | Stone  | 26 | 29 40 44 45 51 74 76 77                                     |                |
| Hebron Cream                    | Stone  | 25 | 26 37 43 50 60  |                |
| Hebron White                    | Stone  | 38 | 50 60 62 76   |                |
| Honed & Polished                | Finish | 5  | 19 20 23 29 34 36 44 56 60 61                               |                |
| Jerusalem Red                   | Stone  | 43 | 46 53 64 69   |                |
| Karina                          | Stone  | 50 | 60  |                |
| Kedem                           | Finish | 76 |   |                |
| Light Chiseled                  | Finish | 12 | 13 23 24 25 26 31 34 35 38 39 40 46 64 65                   |                |
| Limestone                       | Stone  | 56 | All The Jerusalem Stones                                    |                |
| Marble                          | Stone  | 19 | 23 59   |                |
| Midbar                          | Finish | 76 | 77  |                |





## Credits

### Editing:

Tali Mordoch  
Hagar Mordoch

### Designed & Produced by:

Studio Shuki Kook

### Photographers:

Shuki Kook  
Tom Kook  
Robert Preston  
Client's photos  
JGSW photos  
Gadi Gefen  
Roni Matityahu  
Ilan Shtulman  
Gidi Boaz  
Theodor Dargan

For additional information regarding  
the projects shown in our catalogue,  
please contact Jerusalem Gardens.  
© All rights reserved  
to Jerusalem Gardens Stone Works Ltd.  
Printed by offset "AB" Tel Aviv, 2010.



JG Stone, Church of the Transfiguration, Orleans MA.



Stone Works Ltd.

Tel: +972 (2) 992-2113, Fax: +972 (2) 992-2114, [info@jerusalemgardens.com](mailto:info@jerusalemgardens.com), [www.jerusalemgardens.com](http://www.jerusalemgardens.com)  
Industriale zone, Hartuv B, Beit Shemesh, Israel 99000.